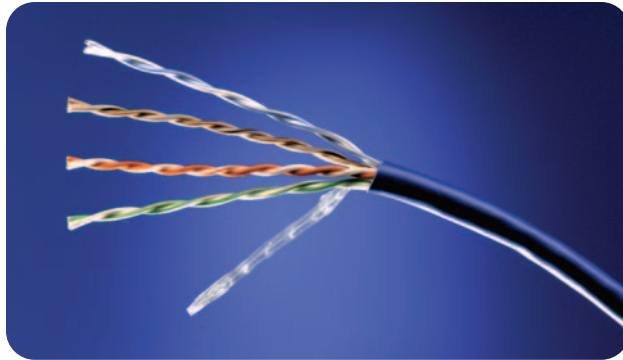


# Basic Structured Cabling Systems

## Category 5e 4-Pair Riser Data Cable



ADC's Basic Category 5e and Category 6 Structured Cabling Systems are complete channel solutions offering 20-year product performance warranties along with a multitude of product choices and design options. In addition, the components of these economical systems are also guaranteed to meet the minimum requirements of TIA 568B for Category 5e and Category 6 for dependable data transmission in any network configuration, from the switch to the network interface.

### Features:

- Unparalleled delay skew performance
- Manufactured with lead-free materials

### Compliances:

- UL Subject 444
- (UL)-C(UL) Type CMR/CMG
- (UL)-C(UL) Type CM/CMH
- ICEA S-90-661
- NEC 800 Type CMR or CM
- ISO/IEC 11801 Class D
- ETL verified TIA/EIA-568-B.2 Category 5e horizontal cable requirements

SPEC SHEET



www.adc.com • +1-952-938-8080 • 1-800-366-3891



# Basic Structured Cabling Systems

## Category 5e 4-Pair Riser Data Cable

### Specifications

#### CONSTRUCTION

<b>Conductors:</b>	24 AWG solid bare copper
<b>Insulation:</b>	Polyolefin
<b>Pairing:</b>	Short, staggered pair lays
<b>Jacket:</b>	Lead-free, flame retardant PVC
<b>Nominal outer diameter:</b>	4.7 mm (.185")

#### ELECTRICAL CHARACTERISTICS

<b>Conductor DC resistance (maximum):</b>	9.38 $\Omega$ /100 meters (28.6 $\Omega$ /1000 ft) @ 20 °C (68 °F)
<b>DC resistance unbalance (maximum):</b>	2%
<b>Mutual capacitance (maximum):</b>	5.6 nF/100 meters (17 pF/ft)
<b>Operating temperature (maximum):</b>	75 °C (167 °F)
<b>Operating voltage (maximum):</b>	300 VDC
<b>Worst case cable skew:</b>	25 nS/100 meters (25 nS/328 ft)
<b>Nominal velocity of propagation:</b>	69%

FREQ (MHz)	FITTED IMPEDANCE (Ohms)	INSERTION LOSS (dB/100m)		RETURN LOSS (dB/100m)		Pair-Pair NEXT (dB/100m)		PSNEXT (dB/100m)	
	SPEC	Max	TIA Spec	Min	TIA Spec	Min	TIA Spec	Min	TIA Spec
1	100 +/- 15	1.9	2.0	32.1	20.0	74.1	65.3	70.3	62.3
4	100 +/- 15	3.8	4.1	29.2	23.0	65.3	56.3	61.0	53.3
8	100 +/- 15	5.4	5.8	27.4	24.5	60.6	51.8	56.6	48.8
10	100 +/- 15	6.2	6.5	24.8	25.0	59.8	50.3	54.5	47.3
16	100 +/- 15	7.7	8.2	25.0	25.0	57.4	47.2	51.2	44.2
20	100 +/- 15	8.9	9.3	25.2	25.0	56.9	45.8	50.8	42.8
25	100 +/- 15	9.7	10.4	26.4	24.3	52.7	44.3	47.9	41.3
31.25	100 +/- 15	10.9	11.7	25.0	23.6	51.3	42.9	47.6	39.9
62.5	100 +/- 15	16.1	17.0	23.1	21.5	45.1	38.4	42.8	35.4
100	100 +/- 15	21.2	22.0	21.5	20.1	42.4	35.3	39.5	32.3
155	100 +/- 15	26.3		27.8		37.2		35.2	

FREQ (MHz)	Pair-Pair ACR (dB/100m)		PSACR (dB/100m)		Pair-Pair ELFEXT (dB/100m)		PSELFEXT (dB/100m)	
	Min	TIA Spec	Min	TIA Spec	Min	TIA Spec	Min	TIA Spec
1	72.6	63.3	69.5	60.3	69.2	63.8	68.9	60.8
4	59.8	52.2	57.4	49.2	58.9	51.8	59.1	48.8
8	53.9	46.0	51.2	43.0	52.6	45.7	53.4	42.7
10	52.3	43.8	48.3	40.8	49.5	43.8	51.2	40.8
16	47.2	39.0	43.1	36.0	44.7	39.7	47.3	36.7
20	46.6	36.5	42.6	33.5	41.6	37.8	44.8	34.8
25	41.5	33.9	37.8	30.9	39.1	37.8	42.1	32.8
31.25	40.9	31.2	37.2	28.2	37.5	35.8	40.2	30.9
62.5	31.2	21.4	26.7	18.4	31.4	33.9	32.3	24.9
100	22.9	13.3	18.9	10.3	27.1	27.9	20.6	20.8
155	12.4		9.2		21.8	23.8	15.2	

NOTE: The above listed discrete frequency electrical performance values are provided for engineering information only. Actual compliance testing is based on swept frequency measurements. The spec values are based on the TIA/EIA 568-B.2 specification.

12/05 • 101848AE Category 5e 4-Pair Riser Cable



# Basic Structured Cabling Systems

## Category 5e 4-Pair Riser Data Cable

### Ordering Information

Description	Weight (Lbs/kft)	Catalog Number*
<b>4-pair cable, CMR flame rating</b>		
Reel packaging	20	5ETR-XXYY
Reelx-1000'	20	5ETR-XXII

XX = Jacket Color: BL = Blue, WT = White, GY = Gray, GN = Green, YL = Yellow, RD = Red  
 YY = Length: 02 = 1,000 ft, 04 = 2,000 ft

12/05 • 101848AE Category 5e 4-Pair Riser Cable

SPEC SHEET



**Web Site: [www.adc.com](http://www.adc.com)**

From North America, Call Toll Free: 1-800-366-3891 • Outside of North America: +1-952-938-8080  
Fax: +1-952-917-3237 • For a listing of ADC's global sales office locations, please refer to our web site.

ADC Telecommunications, Inc., P.O. Box 1101, Minneapolis, Minnesota USA 55440-1101  
Specifications published here are current as of the date of publication of this document. Because we are continuously improving our products, ADC reserves the right to change specifications without prior notice. At any time, you may verify product specifications by contacting our headquarters office in Minneapolis. ADC Telecommunications, Inc. views its patent portfolio as an important corporate asset and vigorously enforces its patents. Products or features contained herein may be covered by one or more U.S. or foreign patents. An Equal Opportunity Employer

**101848AE 12/05 Original © 2005 ADC Telecommunications, Inc. All Rights Reserved**