

BASIC CATEGORY 5e AND CATEGORY 6 STRUCTURED CABLING SYSTEMS



ADC's Basic Category 5e and Category 6 Structured Cabling Systems are complete channel solutions offering 20-year product performance warranties along with a multitude of product choices and design options. In addition, the components of these economical systems are also guaranteed to meet the minimum requirements of TIA 568B for Category 5e and Category 6 for dependable data transmission in any network configuration, from the switch to the network interface.

Data Cables

Features	Description	Category 5e Catalog Number	Category 6 Catalog Number
<ul style="list-style-type: none"> Unparalleled delay skew performance Manufactured with lead-free materials 	4-Pair Plenum Data Cable 4-Pair Riser Data Cable	5ESP-XXYY 5ETR-XXYY	6TP-XXYY 6TRT-XXYY

XX = Jacket Color: BL = Blue, WT = White, GY = Gray, GN = Green, YL = Yellow, RD = Red
 YY = Length: 02 = 1,000 ft, 04 = 2,000 ft, 11 = 1,000 ft Relex

Patch Panels

Features	Description	Category 5e Catalog Number	Category 6 Catalog Number
<ul style="list-style-type: none"> High density with 24-port (1RU) and 48-port (2RU) Silk-screen label for quick and precise port labeling. Universal 568A/B wiring label 	1RU 24-port patch panel 2RU 48-port patch panel	ECO PANEL-24 ECO PANEL-48	ECO6-PANEL-24 ECO6-PANEL-48

Patch Cords

Features	Description	Category 5e Catalog Number	Category 6 Catalog Number
<ul style="list-style-type: none"> Wiring T568B, Approved for channel performance when used within the complete solution 	RJ45-RJ45 plug UTP T568B PVC patch cord	ECO PATCH-XXYY	ECO6-PATCH-XXYY

XX = Color: WT = White, BL = Blue, YL = Yellow, GN = Green, GY = Gray
 YY = Length: 04 = 4 ft, 07 = 7 ft, 10 = 10 ft, 15 = 15 ft, 25 = 25 ft, 50 = 50 ft

Modular Jacks

Features	Description	Category 5e Catalog Number	Category 6 Catalog Number
<ul style="list-style-type: none"> Traditional right angle jack Universal 568A/B wiring label 	RJ45 UTP modular 568A/B jack	ECOJACK-XX	ECO6-JACK-XX

XX = Jacket Color: BK = Black, BL = Blue, ELCIV = Electrical Ivory, GN = Green, GY = Gray, IV = Ivory, OR = Orange, RD = Red, WT=White, YL=Yellow

110 Blocks

Features	Description	Category 5e Catalog Number
<ul style="list-style-type: none"> Fits standard 110 footprint Offered in 4 or 5 pair increments Includes label and label holders for circuit identification 	100 pair block – 4 pair increments 100 pair block – 5 pair increments 300 pair block – 4 pair increments 300 pair block – 5 pair increments 4-pair C-Clip (pack of 24pcs) 5-pair C-Clip (pack of 20pcs) Cable Trough	ECO BLOCK 100-4L ECO BLOCK 100-5L ECO BLOCK 300-4L ECO BLOCK 300-5L ECO BLOCK-4 ECO BLOCK-5 ECO TROUGH-L

Faceplates

Description	Catalog Number
Faceplate 1-Port Flush Mount Single Gang	ECO FP1-XX
Faceplate 2-Port Flush Mount Single Gang	ECO FP2-XX
Faceplate 3-Port Flush Mount Single Gang	ECO FP3-XX
Faceplate 4-Port Flush Mount Single Gang	ECO FP4-XX
Faceplate 6-Port Flush Mount Single Gang	ECO FP6-XX
Faceplate Single Gang Multi-Port Ring	ECO-SGMPFPR-XX
Faceplate Dual Gang Multi-Port Ring	ECO-DGMPFPR-XX
Bezel Keystone 1-Port for Multi-Port Ring	ECO-1BEZEL-XX
Bezel Keystone 2-Port for Multi-Port Ring	ECO-2BEZEL-XX
Bezel Blank 1-Port for Multi-Port Ring	ECO-BBEZEL-XX
Bezel SVGA 1-Port for Multi-Port Ring	ECO-SVGABEZEL-XX
SVGA 110 IDC DB15	ECO-SVGA110-XX
SVGA Female to Female DB15	ECO-SVGAFF-XX

XX = Faceplate Color: ELCIV = Electrical Ivory, IV = Ivory, WT=White

Surface Mount Boxes

Description	Catalog Number
2-Port Surface Mount Box	ECO-SMB-02
4-Port Surface Mount Box	ECO-SMB-04



Web Site: www.adc.com

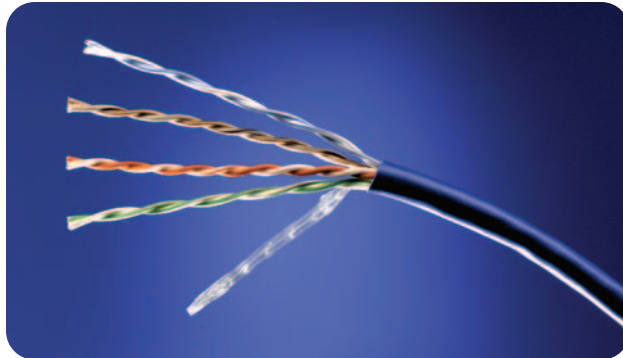
From North America, Call Toll Free: 1-800-366-3891 • Outside of North America: +1-952-938-8080
 Fax: +1-952-917-3237 • For a listing of ADC's global sales office locations, please refer to our web site.

ADC Telecommunications, Inc., P.O. Box 1101, Minneapolis, Minnesota USA 55440-1101
 Specifications published here are current as of the date of publication of this document. Because we are continuously improving our products, ADC reserves the right to change specifications without prior notice. At any time, you may verify product specifications by contacting our headquarters office in Minneapolis. ADC Telecommunications, Inc. views its patent portfolio as an important corporate asset and vigorously enforces its patents. Products or features contained herein may be covered by one or more U.S. or foreign patents. An Equal Opportunity Employer

101851AE 12/05 Original © 2005 ADC Telecommunications, Inc. All Rights Reserved

Basic Structured Cabling Systems

Category 5e 4-Pair Riser Data Cable



ADC's Basic Category 5e and Category 6 Structured Cabling Systems are complete channel solutions offering 20-year product performance warranties along with a multitude of product choices and design options. In addition, the components of these economical systems are also guaranteed to meet the minimum requirements of TIA 568B for Category 5e and Category 6 for dependable data transmission in any network configuration, from the switch to the network interface.

Features:

- Unparalleled delay skew performance
- Manufactured with lead-free materials

Compliances:

- UL Subject 444
- (UL)-C(UL) Type CMR/CMG
- (UL)-C(UL) Type CM/CMH
- ICEA S-90-661
- NEC 800 Type CMR or CM
- ISO/IEC 11801 Class D
- ETL verified TIA/EIA-568-B.2 Category 5e horizontal cable requirements

SPEC SHEET



www.adc.com • +1-952-938-8080 • 1-800-366-3891



Basic Structured Cabling Systems

Category 5e 4-Pair Riser Data Cable

Specifications

CONSTRUCTION

Conductors:	24 AWG solid bare copper
Insulation:	Polyolefin
Pairing:	Short, staggered pair lays
Jacket:	Lead-free, flame retardant PVC
Nominal outer diameter:	4.7 mm (.185")

ELECTRICAL CHARACTERISTICS

Conductor DC resistance (maximum):	9.38 Ω /100 meters (28.6 Ω /1000 ft) @ 20 °C (68 °F)
DC resistance unbalance (maximum):	2%
Mutual capacitance (maximum):	5.6 nF/100 meters (17 pF/ft)
Operating temperature (maximum):	75 °C (167 °F)
Operating voltage (maximum):	300 VDC
Worst case cable skew:	25 nS/100 meters (25 nS/328 ft)
Nominal velocity of propagation:	69%

FREQ (MHz)	FITTED IMPEDANCE (Ohms)	INSERTION LOSS (dB/100m)		RETURN LOSS (dB/100m)		Pair-Pair NEXT (dB/100m)		PSNEXT (dB/100m)	
	SPEC	Max	TIA Spec	Min	TIA Spec	Min	TIA Spec	Min	TIA Spec
1	100 +/- 15	1.9	2.0	32.1	20.0	74.1	65.3	70.3	62.3
4	100 +/- 15	3.8	4.1	29.2	23.0	65.3	56.3	61.0	53.3
8	100 +/- 15	5.4	5.8	27.4	24.5	60.6	51.8	56.6	48.8
10	100 +/- 15	6.2	6.5	24.8	25.0	59.8	50.3	54.5	47.3
16	100 +/- 15	7.7	8.2	25.0	25.0	57.4	47.2	51.2	44.2
20	100 +/- 15	8.9	9.3	25.2	25.0	56.9	45.8	50.8	42.8
25	100 +/- 15	9.7	10.4	26.4	24.3	52.7	44.3	47.9	41.3
31.25	100 +/- 15	10.9	11.7	25.0	23.6	51.3	42.9	47.6	39.9
62.5	100 +/- 15	16.1	17.0	23.1	21.5	45.1	38.4	42.8	35.4
100	100 +/- 15	21.2	22.0	21.5	20.1	42.4	35.3	39.5	32.3
155	100 +/- 15	26.3		27.8		37.2		35.2	

FREQ (MHz)	Pair-Pair ACR (dB/100m)		PSACR (dB/100m)		Pair-Pair ELFEXT (dB/100m)		PSELFEXT (dB/100m)	
	Min	TIA Spec	Min	TIA Spec	Min	TIA Spec	Min	TIA Spec
1	72.6	63.3	69.5	60.3	69.2	63.8	68.9	60.8
4	59.8	52.2	57.4	49.2	58.9	51.8	59.1	48.8
8	53.9	46.0	51.2	43.0	52.6	45.7	53.4	42.7
10	52.3	43.8	48.3	40.8	49.5	43.8	51.2	40.8
16	47.2	39.0	43.1	36.0	44.7	39.7	47.3	36.7
20	46.6	36.5	42.6	33.5	41.6	37.8	44.8	34.8
25	41.5	33.9	37.8	30.9	39.1	37.8	42.1	32.8
31.25	40.9	31.2	37.2	28.2	37.5	35.8	40.2	30.9
62.5	31.2	21.4	26.7	18.4	31.4	33.9	32.3	24.9
100	22.9	13.3	18.9	10.3	27.1	27.9	20.6	20.8
155	12.4		9.2		21.8	23.8	15.2	

NOTE: The above listed discrete frequency electrical performance values are provided for engineering information only. Actual compliance testing is based on swept frequency measurements. The spec values are based on the TIA/EIA 568-B.2 specification.

12/05 • 101848AE Category 5e 4-Pair Riser Cable



Basic Structured Cabling Systems

Category 5e 4-Pair Riser Data Cable

Ordering Information

Description	Weight (Lbs/kft)	Catalog Number*
4-pair cable, CMR flame rating		
Reel packaging	20	5ETR-XXYY
Reelx-1000'	20	5ETR-XXII

XX = Jacket Color: BL = Blue, WT = White, GY = Gray, GN = Green, YL = Yellow, RD = Red
YY = Length: 02 = 1,000 ft, 04 = 2,000 ft

1 2 / 0 5 • 1 0 1 8 4 8 A E Category 5e 4-Pair Riser Cable

SPEC SHEET



Web Site: www.adc.com

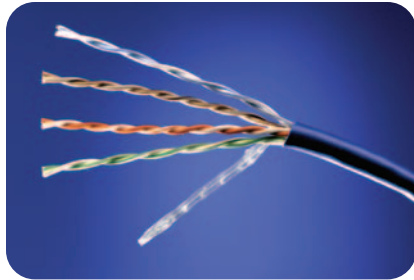
From North America, Call Toll Free: 1-800-366-3891 • Outside of North America: +1-952-938-8080
Fax: +1-952-917-3237 • For a listing of ADC's global sales office locations, please refer to our web site.

ADC Telecommunications, Inc., P.O. Box 1101, Minneapolis, Minnesota USA 55440-1101
Specifications published here are current as of the date of publication of this document. Because we are continuously improving our products, ADC reserves the right to change specifications without prior notice. At any time, you may verify product specifications by contacting our headquarters office in Minneapolis. ADC Telecommunications, Inc. views its patent portfolio as an important corporate asset and vigorously enforces its patents. Products or features contained herein may be covered by one or more U.S. or foreign patents. An Equal Opportunity Employer

101848AE 12/05 Original © 2005 ADC Telecommunications, Inc. All Rights Reserved

Basic Structured Cabling Systems

Category 5e 4-Pair Plenum Data Cable



ADC's Basic Category 5e and Category 6 Structured Cabling Systems are complete channel solutions offering 20-year product performance warranties along with a multitude of product choices and design options. In addition, the components of these economical systems are also guaranteed to meet the minimum requirements of TIA 568B for Category 5e and Category 6 for dependable data transmission in any network configuration, from the switch to the network interface.

Features:

- Unparalleled delay skew performance
- Manufactured with lead-free materials

Compliances:

- UL Subject 444
- (UL)-C(UL) Type CMP
- ICEA S-90-661
- NEC 800 Type CMP
- ISO/IEC 11801 Class D
- ETL verified TIA/EIA-568-B.2 Category 5e horizontal cable requirements

SPEC SHEET



www.adc.com • +1-952-938-8080 • 1-800-366-3891



Basic Structured Cabling Systems

Category 5e 4-Pair Plenum Data Cable

Specifications

CONSTRUCTION

Conductors:	24 AWG solid bare copper
Insulation:	100% FEP
Pairing:	Short, staggered pair lays
Jacket:	Lead-free, flame retardant PVC
Nominal outer diameter:	4.57 mm (.180")

ELECTRICAL CHARACTERISTICS

Conductor DC resistance (maximum):	9.38 Ω /100 meters (28.6 Ω /1000 ft) @ 20 °C (68 °F)
DC resistance unbalance (maximum):	2%
Mutual capacitance (maximum):	5.6 nF/100 meters (17 pF/ft)
Operating temperature (maximum):	75 °C (167 °F)
Operating voltage (maximum):	300 VDC
Worst case cable skew:	25 nS/100 meters (25 nS/328 ft)
Nominal velocity of propagation:	75%

FREQ (MHz)	FITTED IMPEDANCE (Ohms)	INSERTION LOSS (dB/100m)		RETURN LOSS (dB/100m)		Pair-Pair NEXT (dB/100m)		PSNEXT (dB/100m)	
	SPEC	Max	TIA Spec	Min	TIA Spec	Min	TIA Spec	Min	TIA Spec
1	100 +/- 15	1.9	2.0	25.6	20.0	71.7	65.3	69.6	62.3
4	100 +/- 15	4.0	4.1	27.1	23.0	64.1	56.3	60.8	53.3
8	100 +/- 15	5.6	5.8	28.5	24.5	57.9	51.8	56.3	48.8
10	100 +/- 15	6.3	6.5	29.8	25.0	57.2	50.3	55.2	47.3
16	100 +/- 15	8.1	8.2	29.5	25.0	54.2	47.2	51.7	44.2
20	100 +/- 15	9.2	9.3	30.4	25.0	53.1	45.8	50.0	42.8
25	100 +/- 15	10.2	10.4	31.2	24.3	48.5	44.3	46.8	41.3
31.25	100 +/- 15	11.5	11.7	30.7	23.6	50.9	42.9	48.0	39.9
62.5	100 +/- 15	16.5	17.0	26.7	21.5	46.6	38.4	44.0	35.4
100	100 +/- 15	21.3	22.0	24.6	20.1	42.5	35.3	40.0	32.3
155	100 +/- 15	26.5		23.0		44.6		39.9	

FREQ (MHz)	Pair-Pair ACR (dB/100m)		PSACR (dB/100m)		Pair-Pair ELFEXT (dB/100m)		PSELFEXT (dB/100m)	
	Min	TIA Spec	Min	TIA Spec	Min	TIA Spec	Min	TIA Spec
1	69.8	63.3	67.7	60.3	67.3	63.8	65.8	60.8
4	60.2	52.2	56.9	49.2	55.8	51.8	54.2	48.8
8	52.4	46.0	50.7	43.0	49.9	45.7	48.3	42.7
10	51.0	43.8	48.8	40.8	47.8	43.8	46.3	40.8
16	46.3	39.0	43.8	36.0	43.9	39.7	42.3	36.7
20	44.1	36.5	41.1	33.5	41.9	37.8	40.3	34.8
25	38.5	33.9	36.8	30.9	40.1	35.8	38.5	32.8
31.25	39.6	31.2	36.8	28.2	38.1	33.9	36.5	30.9
62.5	30.4	21.4	27.9	18.4	32.5	27.9	30.8	24.9
100	21.8	13.3	19.0	10.3	29.0	23.8	27.3	20.8
155	20.5		17.8		27.5		25.3	

NOTE: The above listed discrete frequency electrical performance values are provided for engineering informatoin only. Actual compliance testing is based on swept frequency measurements. The spec values are based on TIA/EIA-568-B.2 specification.

Category 5e 4-Pair Plenum Cable

1 2 / 0 5 • 1 0 1 8 4 9 A E



Basic Structured Cabling Systems

Category 5e 4-Pair Plenum Data Cable

Ordering Information

Description	Weight (Lbs/kft)	Catalog Number
4-pair cable		
Reel packaging	21	5ESP-XXYY
Reelex-1000'	20	5ESP-XXII

XX = Jacket Color: BL = Blue, WT = White, GY = Gray, GN = Green, YL = Yellow, RD = Red
YY = Length: 02 = 1,000 ft, 04 = 2,000 ft

Category 5e 4-Pair Plenum Cable

12/05 • 101849AE

SPEC SHEET



Web Site: www.adc.com

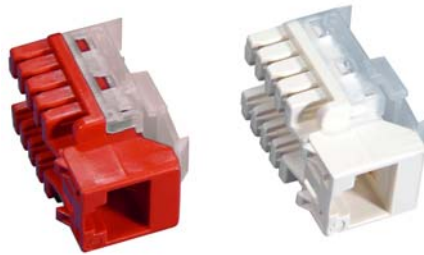
From North America, Call Toll Free: 1-800-366-3891 • Outside of North America: +1-952-938-8080
Fax: +1-952-917-3237 • For a listing of ADC's global sales office locations, please refer to our web site.

ADC Telecommunications, Inc., P.O. Box 1101, Minneapolis, Minnesota USA 55440-1101
Specifications published here are current as of the date of publication of this document. Because we are continuously improving our products, ADC reserves the right to change specifications without prior notice. At any time, you may verify product specifications by contacting our headquarters office in Minneapolis. ADC Telecommunications, Inc. views its patent portfolio as an important corporate asset and vigorously enforces its patents. Products or features contained herein may be covered by one or more U.S. or foreign patents. An Equal Opportunity Employer

101849AE 12/05 Original © 2005 ADC Telecommunications, Inc. All Rights Reserved

Basic Structured Cabling Systems

Category 5e Modular Jacks



ADC's Basic Category 5e and Category 6 Structured Cabling Systems are complete channel solutions offering 20-year product performance warranties along with a multitude of product choices and design options. In addition, the components of these economical systems are also guaranteed to meet the minimum requirements of TIA 568B for Category 5e and Category 6 for dependable data transmission in any network configuration, from the switch to the network interface.

Features:

- Traditional right angle jack
- Wires can be terminated with a 110 tool
- Universal 568A/B wiring label
- Compatible with any ADC modular faceplate, modular furniture faceplate, surface box and modular patch panel

Compliances:

- Meets TIA/EIA/IEEE Category 5e performance standards

SPEC SHEET



Specifications

Environment for use:	Indoors, in dry, closed room
Operating Temperature Range:	-10° to 60 °C (14° to 43 °F)
RJ Socket, 8 positions, General specification:	FCC part 68.500
Transmission performance:	≥TIA/EIA 568-B.2 Category 5e
Number of plug insertion cycles:	≥750
LSA-Plus® Insulation Displacement	
Wire diameter for solid copper conductors:	22-26 AWG (0.40 to 0.65 mm)
110 Interface Resistance:	≤20mΩ
Contact Resistance:	≤1mΩ
Number of Wire Re-terminations:	≥100
Electrical Rating of Complete Assembly at 25 °C (77 °F) and 50%RH	
Ring Voltage Rating:	≤150V AC
Current Rating:	<2A
Insulation Resistance:	≥100 MΩ at 500V DC
Safety Rating:	UL 1863

Ordering Information

Description	Catalog Number
RJ45 UTP modular 568 A/B jack	ECOJACK-XX

XX = Jack Color: BK = Black, BL = Blue, ELCIV = Electrical Ivory, GN = Green, GY = Gray, IV = Ivory, OR = Orange, RD = Red, WT = White, YL = Yellow

SPEC SHEET



Web Site: www.adc.com

From North America, Call Toll Free: 1-800-366-3891 • Outside of North America: +1-952-938-8080
Fax: +1-952-917-3237 • For a listing of ADC's global sales office locations, please refer to our web site.

ADC Telecommunications, Inc., P.O. Box 1101, Minneapolis, Minnesota USA 55440-1101
Specifications published here are current as of the date of publication of this document. Because we are continuously improving our products, ADC reserves the right to change specifications without prior notice. At any time, you may verify product specifications by contacting our headquarters office in Minneapolis. ADC Telecommunications, Inc. views its patent portfolio as an important corporate asset and vigorously enforces its patents. Products or features contained herein may be covered by one or more U.S. or foreign patents. An Equal Opportunity Employer

101847AE 12/05 Original © 2005 ADC Telecommunications, Inc. All Rights Reserved

Basic Structured Cabling Systems

Category 5e Patch Panels



ADC's Basic Category 5e and Category 6 Structured Cabling Systems are complete channel solutions offering 20-year product performance warranties along with a multitude of product choices and design options. In addition, the components of these economical systems are also guaranteed to meet the minimum requirements of TIA 568B for Category 5e and Category 6 for dependable data transmission in any network configuration, from the switch to the network interface.

Features:

- High density with 24-port (1RU) and 48-port (2RU)
- Wires can be terminated with a 110 tool
- Silkscreen write-on label for quick and precise port labeling
- Universal 568A/B wiring label

Compliances:

- Meets TIA/EIA/IEEE Category 5e performance standards

SPEC SHEET



www.adc.com • +1-952-938-8080 • 1-800-366-3891

Specifications

Environment for use:	Indoors, in dry, closed room
Operating Temperature Range:	-10° to 60 °C (14° to 43 °F)
RJ Socket, 8 positions, General specification:	FCC part 68.500
Transmission performance:	≥TIA/EIA 568-B.2 Category 5e
Number of plug insertion cycles:	≥750
LSA-Plus® Insulation Displacement	
Wire diameter for solid copper conductors:	22-26 AWG (0.40 to 0.65 mm)
110 Interface Resistance:	≤20mΩ
Contact Resistance:	≤1mΩ
Number of Wire Re-terminations:	≥100
Electrical Rating of Complete Assembly at 25 °C (77 °F) and 50%RH	
Ring Voltage Rating:	≤150V AC
Current Rating:	<2A
Insulation Resistance:	≥100 MΩ at 500V DC
Safety Rating:	UL 1863

Ordering Information

Description	Catalog Number
1RU 24-port patch panel	ECO PANEL-24
2RU 48-port patch panel	ECO PANEL-48

SPEC SHEET



Web Site: www.adc.com

From North America, Call Toll Free: 1-800-366-3891 • Outside of North America: +1-952-938-8080
Fax: +1-952-917-3237 • For a listing of ADC's global sales office locations, please refer to our web site.

ADC Telecommunications, Inc., P.O. Box 1101, Minneapolis, Minnesota USA 55440-1101
Specifications published here are current as of the date of publication of this document. Because we are continuously improving our products, ADC reserves the right to change specifications without prior notice. At any time, you may verify product specifications by contacting our headquarters office in Minneapolis. ADC Telecommunications, Inc. views its patent portfolio as an important corporate asset and vigorously enforces its patents. Products or features contained herein may be covered by one or more U.S. or foreign patents. An Equal Opportunity Employer

101845AE 12/05 Original © 2005 ADC Telecommunications, Inc. All Rights Reserved

Basic Structured Cabling Systems

Category 5e Patch Cords



ADC's Basic Category 5e and Category 6 Structured Cabling Systems are complete channel solutions offering 20-year product performance warranties along with a multitude of product choices and design options. In addition, the components of these economical systems are also guaranteed to meet the minimum requirements of TIA 568B for Category 5e and Category 6 for dependable data transmission in any network configuration, from the switch to the network interface.

Features:

- Wiring T568B
- Approved for channel performance when used within the complete solution

Compliances:

- Meets TIA/EIA/IEEE Category 5e performance standards

SPEC SHEET



www.adc.com • +1-952-938-8080 • 1-800-366-3891

Specifications

Operating Temperature Range:	-10° to 60 °C (14° to 43 °F)
RJ45 Plug Interface According to:	IEC 60603-7
Transmission performance:	≥TIA/EIA 568-B.2 Category 5e ≥ISO/IEC 11801 Class D
Number of plug insertion cycles:	≥750 (IEC/EN 60603-7)
Safety Rating:	UL 1863

Ordering Information

Description	Catalog Number
RJ45-RJ45 plug UTP T568B PVC patch cord	ECO PATCH-XXYY

XX = Color: WT = White, BL = Blue, YL = Yellow, GN = Green, GY = Gray
YY = Length: 04 = 4ft; 07 = 7ft, 10 = 10ft, 15 = 15ft, 25 = 25 ft. 50 = 50ft.

SPEC SHEET



Web Site: www.adc.com

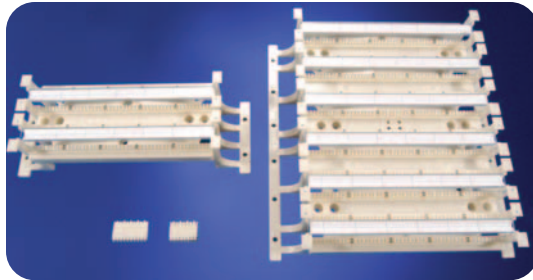
From North America, Call Toll Free: 1-800-366-3891 • Outside of North America: +1-952-938-8080
Fax: +1-952-917-3237 • For a listing of ADC's global sales office locations, please refer to our web site.

ADC Telecommunications, Inc., P.O. Box 1101, Minneapolis, Minnesota USA 55440-1101
Specifications published here are current as of the date of publication of this document. Because we are continuously improving our products, ADC reserves the right to change specifications without prior notice. At any time, you may verify product specifications by contacting our headquarters office in Minneapolis. ADC Telecommunications, Inc. views its patent portfolio as an important corporate asset and vigorously enforces its patents. Products or features contained herein may be covered by one or more U.S. or foreign patents. An Equal Opportunity Employer

101846AE 12/05 Original © 2005 ADC Telecommunications, Inc. All Rights Reserved

Basic Structured Cabling Systems

Category 5e 110 Type Blocks



ADC's Basic Category 5e and Category 6 Structured Cabling Systems are complete channel solutions offering 20-year product performance warranties along with a multitude of product choices and design options. In addition, the components of these economical systems are also guaranteed to meet the minimum requirements of TIA 568B for Category 5e and Category 6 for dependable data transmission in any network configuration, from the switch to the network interface.

Features:

- Fits standard 110 type footprint
- Wires can be terminated with a 110 tool
- Offered in 4 or 5 pair increments
- Includes label and label holders for circuit identification

Compliances:

- Meets TIA/EIA/IEEE Category 5e performance standards

SPEC SHEET



Specifications

Environment for use:	Indoors, in dry, closed room
Operating Temperature Range:	-10° to 60 °C (14° to 43 °F)
Transmission performance:	≥TIA/EIA 568-B.2 Category 5e
Number of plug insertion cycles:	≥750
LSA-Plus® Insulation Displacement	
Wire diameter for solid copper conductors:	22-26 AWG (0.40 to 0.65 mm)
110 Interface Resistance:	≤20mΩ
Contact Resistance:	≤1mΩ
Number of Wire Re-terminations:	≥100
Electrical Rating of Complete Assembly at 25 °C (77 °F) and 50%RH	
Ring Voltage Rating:	≤150V AC
Current Rating:	<2A
Insulation Resistance:	≥100 MΩ at 500V DC
Safety Rating:	UL 1863

Ordering Information

Description	Catalog Number
110 Type Blocks	
100 pair block – 4 pair increments	ECO BLOCK 100-4L
100 pair block – 5 pair increments	ECO BLOCK 100-5L
300 pair block – 4 pair increments	ECO BLOCK 300-4L
300 pair block – 5 pair increments	ECO BLOCK 300-5L
Accessories	
4-pair C-Clip (pack of 24pcs)	ECO BLOCK-4
5-pair C-Clip (pack of 20pcs)	ECO BLOCK-5
Cable Trough	ECO TROUGH-L

SPEC SHEET



Web Site: www.adc.com

From North America, Call Toll Free: 1-800-366-3891 • Outside of North America: +1-952-938-8080
 Fax: +1-952-917-3237 • For a listing of ADC's global sales office locations, please refer to our web site.

ADC Telecommunications, Inc., P.O. Box 1101, Minneapolis, Minnesota USA 55440-1101
 Specifications published here are current as of the date of publication of this document. Because we are continuously improving our products, ADC reserves the right to change specifications without prior notice. At any time, you may verify product specifications by contacting our headquarters office in Minneapolis. ADC Telecommunications, Inc. views its patent portfolio as an important corporate asset and vigorously enforces its patents. Products or features contained herein may be covered by one or more U.S. or foreign patents. An Equal Opportunity Employer

101844AE 12/05 Original © 2005 ADC Telecommunications, Inc. All Rights Reserved