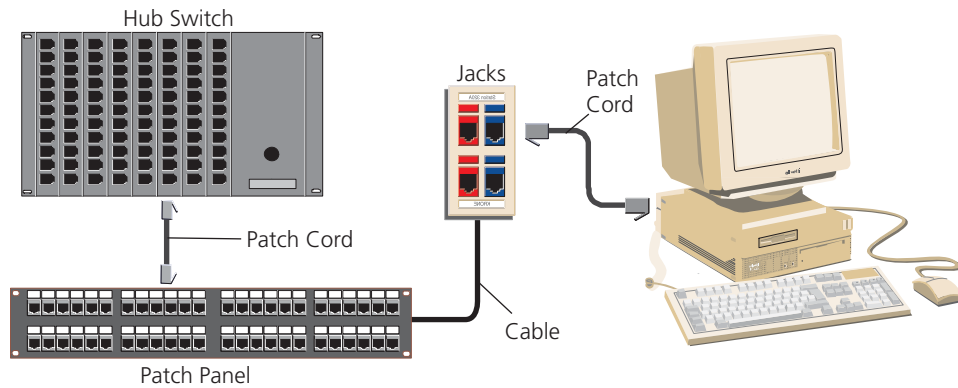


TrueNet®

Category 5e: K610 Jack to K610 Jack



The TrueNet® Category 6 system is a fully integrated family of precisely tuned components each designed to operate at optimum performance with the other. TrueNet Category 5e systems are unmatched in data throughput and are supported by the most comprehensive and thorough warranty in the industry: the TrueNet Zero Bit-Error warranty. The warranty guarantees that the structured cabling system will remain error free for a full 5 years and includes a 20-year electrical performance and free of defect warranty.

The result is a remarkably advanced and high performing end-to-end channel guaranteed beyond the typical industry requirements to maximize network throughput and minimize downtime. Numerous component options are available for versatility and flexible adaptation to meet any infrastructure requirement.

Support Applications:

- 10/100/1000 Base-T (IEEE 802.3xx, 1000 Base-T requires enhance DSP Electronics)
- 4/16 Mb/s Token Ring
- 25,155,622 Mb/s ATM

CHANNEL SPECS



www.adc.com • +1-952-938-8080 • 1-800-366-3891

Active Network Specifications:

IEEE Input Specification Limits/100BASE-T		
Spec	Min.	Max.
Positive Amplitude:	0.95V	1.05V
Negative Amplitude:	.095V	1.05V
Amplitude Symmetry:	0.98%	1.02%
Rise Time:	3 ns	5 ns
Fall Time:	3 ns	5 ns
Rise Time/Fall Time Symmetry:	0 ns	0.5 ns
Jitter:	0%	14%

100 Meter Channel Passive Electrical Specifications

Freq (MHz)	Attenuation (dB)		NEXT (dB)		ACR (dB)		Return Loss (dB)	
	[min]	[typical]	[min]	[typical]	[min]	[typical]	[min]	[typical]
1	3.0	1.7	60.0	80.6	57.0	66.4	17.0	31.7
4	4.5	3.3	53.6	68.9	49.1	64.9	17.0	31.7
8	6.3	4.6	48.6	63.1	42.3	60.5	17.0	31.7
10	7.1	5.2	47.0	61.2	39.9	58.6	17.0	31.7
16	9.1	6.7	43.6	57.3	34.5	53.9	17.0	31.7
20	10.2	7.5	42.0	55.4	31.8	51.2	17.0	31.7
25	11.4	8.5	40.4	53.5	28.9	48.3	16.0	30.7
31.25	12.8	9.5	38.7	51.7	25.9	45.1	15.1	29.7
62.5	18.6	14.0	33.6	45.8	14.9	33.8	12.1	26.7
100	24.0	18.2	30.1	41.9	6.0	24.8	10.0	24.7

- Minimum values [min] represent worst case allowable in TrueNet system.
Minimum TrueNet values are derived from and meet or exceed TIA/EIA Category 5e values.
- Typical values [typical] were obtained from passive testing over a 100 meter channel in a UL certified laboratory under controlled conditions.
- Category 5e channel and components guaranteed to meet or exceed TIA/EIA Category 5e standards.
Channel consisted of AirES® cable, AirES patch cords and K610 jacks.

Characteristic Impedance for Cable: 100Ω(±3Ω)@100 MHz
Channel Propagation Phase Delay: 490 ns
Channel Delay Skew: 22 ns

CHANNEL SPECS



Web Site: www.adc.com

From North America, Call Toll Free: 1-800-366-3891 • Outside of North America: +1-952-938-8080
 Fax: +1-952-917-3237 • For a listing of ADC's global sales office locations, please refer to our web site.

ADC Telecommunications, Inc., P.O. Box 1101, Minneapolis, Minnesota USA 55440-1101
 Specifications published here are current as of the date of publication of this document. Because we are continuously improving our products, ADC reserves the right to change specifications without prior notice. At any time, you may verify product specifications by contacting our headquarters office in Minneapolis. ADC Telecommunications, Inc. views its patent portfolio as an important corporate asset and vigorously enforces its patents. Products or features contained herein may be covered by one or more U.S. or foreign patents. An Equal Opportunity Employer

1326468 6/05 Original © 2005 ADC Telecommunications, Inc. All Rights Reserved