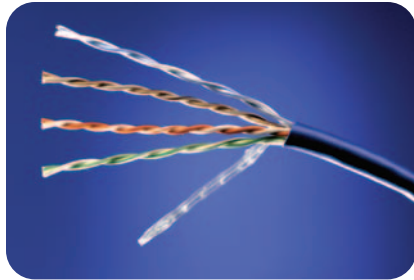


Basic Structured Cabling Systems

Category 6 4-Pair Riser Data Cable



ADC's Basic Category 5e and Category 6 Structured Cabling Systems are complete channel solutions offering 20-year product performance warranties along with a multitude of product choices and design options. In addition, the components of these economical systems are also guaranteed to meet the minimum requirements of TIA 568B for Category 5e and Category 6 for dependable data transmission in any network configuration, from the switch to the network interface.

Features:

- Unparalleled delay skew performance
- Manufactured with lead-free materials

Compliances:

- UL Subject 444
- (UL)-C(UL) Type CMR/CMG
- (UL)-C(UL) Type CM/CMH
- ICEA S-90-661
- NEC 800 Type CMR or CM
- ISO/IEC 11801 Class E
- ETL Verified TIA/EIA-568-B.2-1 Category 6 horizontal cable requirements

SPEC SHEET



www.adc.com • +1-952-938-8080 • 1-800-366-3891



Basic Structured Cabling Systems

Category 6 4-Pair Riser Data Cable

Specifications

CONSTRUCTION

Conductors:	24 AWG solid bare copper
Insulation:	Polyolefin
Pairing:	Short, staggered pair lays
Filler:	Polyolefin
Jacket:	Lead-free, flame retardant PVC
Nominal outer diameter	5.5 mm (.215")

ELECTRICAL CHARACTERISTICS

Conductor DC resistance (maximum):	9.38 Ω /100 meters (28.6 Ω /1000 ft) @ 20 °C (68 °F)
DC resistance unbalance (maximum):	2%
Mutual capacitance (maximum):	5.6 nF/100 meters (17 pF/ft)
Operating temperature (maximum):	75 °C (167 °F)
Operating voltage (maximum):	300 VDC
Worst case cable skew:	25 nS/100 meters (25 nS/328 ft)
Nominal velocity of propagation:	69%

FREQ (MHz)	FITTED IMPEDANCE (Ohms)	INSERTION LOSS (dB/100m)		RETURN LOSS (dB/100m)		Pair-Pair NEXT (dB/100m)		PSNEXT (dB/100m)	
	SPEC	Max	TIA Spec	Min	TIA Spec	Min	TIA Spec	Min	TIA Spec
1	100 +/- 15	1.8	2.0	26.3	20.0	80.1	74.3	78.2	72.3
4	100 +/- 15	3.7	3.8	30.9	22.9	73.6	65.3	70.9	63.3
8	100 +/- 15	5.1	5.3	28.2	24.5	68.4	60.8	62.5	58.8
10	100 +/- 15	5.9	6.0	27.5	25.0	66.3	59.3	63.5	57.3
16	100 +/- 15	7.5	7.6	27.1	25.0	62.9	56.2	61.7	54.2
20	100 +/- 15	8.4	8.5	23.4	25.0	60.5	54.8	59.3	52.8
25	100 +/- 15	9.3	9.5	20.6	24.3	59.1	53.3	56.4	51.3
31.25	100 +/- 15	10.5	10.7	19.8	23.6	58.3	51.9	55.8	49.9
62.5	100 +/- 15	15.1	15.4	19.1	21.5	54.6	47.4	51.6	45.4
100	100 +/- 15	19.5	19.8	16.7	20.1	51.7	44.3	50.9	42.3
155	100 +/- 15	24.6	25.2	10.4	18.8	49.8	41.4	48.2	39.4
200	100 +/- 15	28.1	29.0	8.9	18.0	47.6	39.8	44.3	37.8
250	100 +/- 15	31.6	32.8	7.5	17.3	46.2	38.3	42.5	36.3
300	100 +/- 15	35.3		4.8		42.4		39.1	
350	100 +/- 15	38.1		3.5		40.8		36.8	

FREQ (MHz)	Pair-Pair ACR (dB/100m)		PSACR (dB/100m)		Pair-Pair ELFEXT (dB/100m)		PSELFEXT (dB/100m)		LCL
	Min	TIA Spec	Min	TIA Spec	Min	TIA Spec	Min	TIA Spec	
1	77.8	72.3	75.6	70.3	71.8	67.8	69.4	64.8	40.0
4	71.2	61.5	70.8	59.5	60.1	55.8	60.8	52.8	40.0
8	59.6	55.4	61.5	53.4	54.9	49.7	53.7	46.7	40.0
10	57.5	53.3	58.7	51.3	51.6	47.8	52.1	44.8	40.0
16	55.3	48.7	54.2	46.7	46.5	43.7	48.6	40.7	38.0
20	52.4	46.3	51.5	44.3	45.1	41.8	46.7	38.8	37.0
25	48.9	43.8	48.6	41.8	44.3	39.8	44.3	36.8	36.0
31.25	47.3	41.2	46.1	39.2	42.4	37.9	42.8	34.9	35.1
62.5	40.5	32.0	35.3	30.0	38.6	31.9	38.9	28.9	32.0
100	32.6	24.5	29.9	22.5	35.5	27.8	34.3	24.8	30.0
155	27.8	16.3	24.6	14.3	33.1	24.0	30.8	21.0	28.1
200	21.6	10.8	19.7	8.8	30.8	21.8	28.3	18.8	27.0
250	17.2	5.5	14.1	3.5	28.5	19.8	25.1	16.8	26.0
300	7.3		6.2		24.3		21.6		
350	5.6		2.6		21.6		18.5		

NOTE: The above listed discrete frequency electrical performance values are provided for engineering informatoin only. Actual compliance testing is based on swept frequency measurements. The sp ec values are based on TIA/EIA-568-B.2-1 specification.

12/05 • 101839AE Category 6 4-Pair Riser Cable



Basic Structured Cabling Systems

Category 6 4-Pair Riser Data Cable

Ordering Information

Description	Weight (Lbs/kft)	Catalog Number
4-pair cable, CMR flame rated		
Reel packaging	26	6TRT-XXYY
Reel in a box-1000'	28	6TRT-XXRB

XX = Jacket Color: BL = Blue, WT = White, GY = Gray, GN = Green, YL = Yellow, RD = Red
YY = Length: 02 = 1,000 ft, 04 = 2,000 ft, RB = 1,000 ft reel in a box, II = Reelex

12/05 • 101839AE Category 6 4-Pair Riser Cable

SPEC SHEET



Web Site: www.adc.com

From North America, Call Toll Free: 1-800-366-3891 • Outside of North America: +1-952-938-8080
Fax: +1-952-917-3237 • For a listing of ADC's global sales office locations, please refer to our web site.

ADC Telecommunications, Inc., P.O. Box 1101, Minneapolis, Minnesota USA 55440-1101
Specifications published here are current as of the date of publication of this document. Because we are continuously improving our products, ADC reserves the right to change specifications without prior notice. At any time, you may verify product specifications by contacting our headquarters office in Minneapolis. ADC Telecommunications, Inc. views its patent portfolio as an important corporate asset and vigorously enforces its patents. Products or features contained herein may be covered by one or more U.S. or foreign patents. An Equal Opportunity Employer

101839AE 12/05 Original © 2005 ADC Telecommunications, Inc. All Rights Reserved