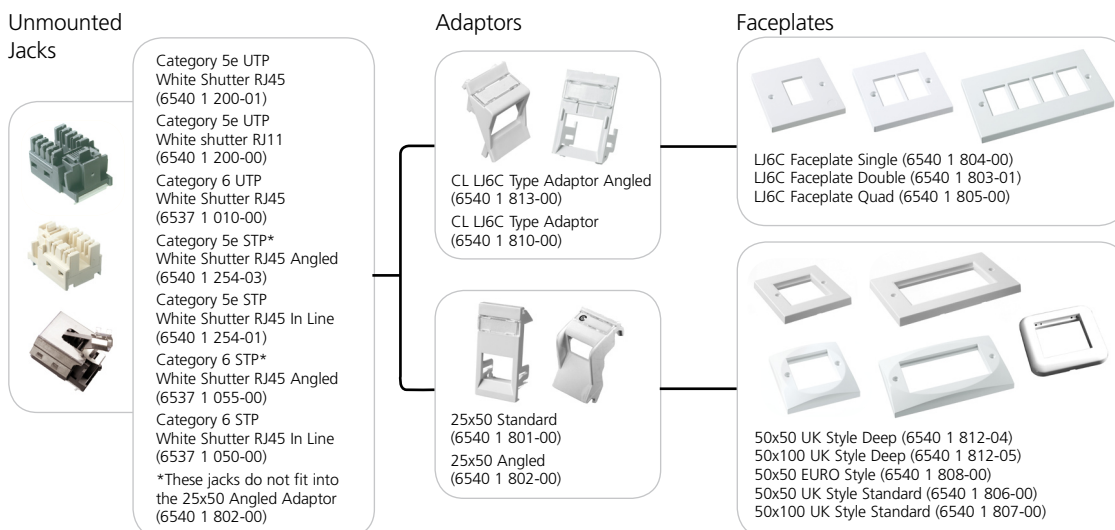


# Work Area Adaptors, Faceplates & Accessories



Adaptors and Faceplates.....	6.50
Accessories .....	6.56

### Compact RJ-K CL Compatibility



### TrueNet® 25x50 Adaptors

Adaptors for use with CL keystone jacks, and UK style faceplates. In-line and angled options available.

#### Dimensions

Standard 25x50 adaptor: 24.8 x 50 x 17mm  
 Angled 25x50 adaptor: 24.8 x 50 x 25.3mm  
 Keystone angled 25x50 adaptor: 24.8 x 50 x 38mm



#### Ordering Information

Description	Catalogue Number
RJ-K CL Standard 25x50 Adaptor (Pack of 20)	6540 1 801-00
RJ-K CL Angled 25x50 Adaptor (Pack of 20)	6540 1 802-00
Keystone Angled 25x50 Adaptor (Pack of 1)	6538 4 111-05
25x50 Blank (Pack of 20)	6540 4 801-01

See below and the next page for UK and Euro style faceplates 50x50 and 50x100 for use with these adaptors.

### TrueNet® 50x50 European Style Faceplates

The Euro style faceplate will accept up to two 25x50 adaptors.

#### Dimensions

Single-gang faceplate: 80 x 80 x 10.5mm



#### Ordering Information

Description	Catalogue Number
Unloaded Faceplate, 50x50 Euro Style, Single-Gang, White (Pack of 10)	6540 1 808-00
Wall-Mountable Back Box	0637 0 006-57

# Work Area

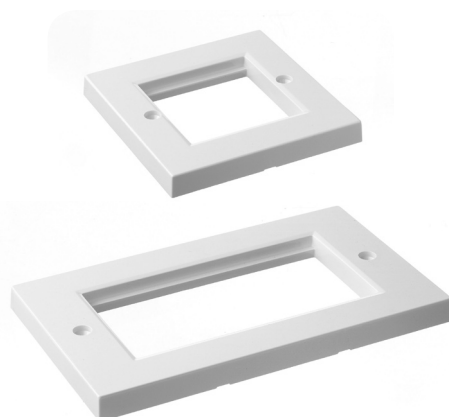
## Adaptors, Faceplates & Accessories

### TrueNet® UK Style Standard Faceplates

UK style, single and double-gang faceplates for use with 25x50 adaptors and CL keystone jacks.

#### Dimensions

50x50 Single-gang faceplate: 80 x 80 x 9.35mm  
 50x100 Double-gang faceplate: 145 x 80 x 9.35mm



#### Ordering Information

Description	Catalogue Number
Unloaded Faceplate, UK Style, 50x50 (single-gang), White (Pack of 10)	6540 1 806-00
Unloaded Faceplate, UK Style, 50x100 (double-gang), White (Pack of 10)	6540 1 807-00

50x50 single-gang faceplate accepts two 25x50 adaptors (see previous page)  
 50x100 double-gang faceplate accepts four 25x50 adaptors (see previous page)

### TrueNet® UK Style Deep Faceplates

UK style, single and double-gang deep faceplates for use with 25x50 adaptors and CL keystone jacks. The deeper faceplate has the added benefit of 6mm added depth against standard UK style product and is therefore ideal for use with Category 6 and CopperTen™ in shallow back boxes.

#### Dimensions

50x50 Single-gang faceplate:  
 Overall dimensions 80 x 80 x 15.35mm  
 50x100 Double-gang faceplate:  
 Overall dimensions 145 x 80 x 15.35mm



#### Ordering Information

Description	Catalogue Number
Unloaded Deep Faceplate, UK Style, 50x50 (single-gang), White (Pack of 10)	6540 1 812-04
Unloaded Deep Faceplate, UK Style, 50x100 (double-gang), White (Pack of 10)	6540 1 812-05

50x50 single-gang faceplate accepts two 25x50 adaptors (see previous page)  
 50x100 double-gang faceplate accepts four 25x50 adaptors (see previous page)

# Work Area

## Adaptors, Faceplates & Accessories

### TrueNet® LJ6C Adaptors

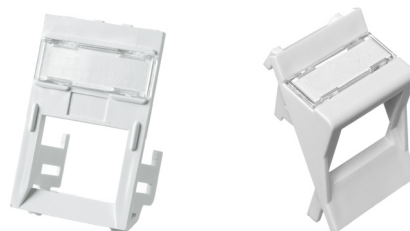
Adaptors for use with CL keystone jacks, and LJ6C UK style faceplates.  
In-line and angled options available.

#### Dimensions

Standard LJ6C adaptor: 24.8 x 38.5 x 17.7mm

Angled LJ6C adaptor: 24.8 x 38.5 x 19mm

Keystone LJ6C adaptor: 24.8 x 38.5 x 14.5mm



#### Ordering Information

Description	Catalogue Number
CL Standard LJ6C Adaptor (Pack of 20)	6540 1 810-00
CL Angled LJ6C Adaptor (Pack of 20)	6540 1 813-00
Keystone Standard LJ6C Adaptor (Pack of 1)	6830 2 402-00

See below for LJ6C style faceplates for use with these adaptors.

### TrueNet® LJ6C UK Style Faceplates

UK style single, double and quad faceplates for use with LJ6C adaptors and CL keystone jacks.

#### Dimensions

Single and double LJ6C faceplate: 85 x 85 x 8mm

Quad LJ6C faceplate: 145 x 85 x 8mm



#### Ordering Information

Description	Catalogue Number
Unloaded Faceplate, UK Style, LJ6C Single, White (Pack of 10)	6540 1 804-00
Unloaded Faceplate, UK Style, LJ6C Double, White (Pack of 10)	6540 1 803-01
Unloaded Faceplate, UK Style, LJ6C Quad, White (Pack of 10)	6540 1 805-00

Single faceplate accepts one LJ6C adaptor

Double faceplate accepts two LJ6C adaptors

Quad faceplate accepts four LJ6C adaptors

# Work Area

## Adaptors, Faceplates & Accessories

### TrueNet® Keystone UK Style Faceplate

UK style faceplate with integrated dust protection for accommodating Category 5e HK and Category 6 KM8® and CopperTen™ keystone jacks.



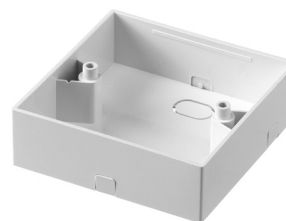
**Dimensions**  
85 x 85mm

#### Ordering Information

Description	Catalogue Number
Unloaded Faceplate, Keystone, UK Style, White, Single	6538 3 111-03
Unloaded Faceplate, Keystone, UK Style, White, Double	6538 3 111-04

### TrueNet® Back Boxes for UK Style Outlets

The back box for surface mounting is designed for surface installations of ADC KRONE's flush mounted, wall duct outlets and trunking.



**Dimensions**  
86 x 86 x 27mm

#### Ordering Information

Description	Catalogue Number
Back Box, Single Gang White	6536 1 005-00
Back Box, Double Gang White	6536 3 044-00

### TrueNet® European Keystone Faceplate for KM8® Only

Two port faceplate, 50x50, for use with Category 6 KM8 jacks only, complete with integrated dust protection and removable corners for installation in areas with restricted space.



#### Dimensions

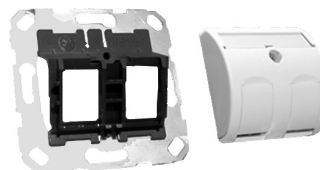
80 high x 80 wide x 24mm deep

#### Ordering Information

Description	Catalogue Number
Unloaded Category 6 KM8 Faceplate, 50x50, Bright White	6690 2 676-00
Unloaded Category 6 KM8 Faceplate, 50x50, White	6690 2 676-01
Unloaded Category 6 KM8 Faceplate, 50x50, Black	6690 2 676-02
Unloaded Category 6 KM8 Faceplate, 50x50, Grey	6690 2 676-03

### TrueNet® European Keystone Faceplate for HK and KM8®

Two port faceplate, 50x50, for use with Category 5e HK and Category 6 KM8 jacks, complete with integrated dust protection and removable corners for installation in areas with restricted space.



#### Dimensions

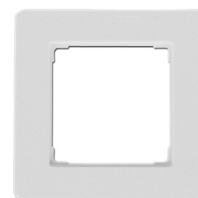
80 high x 80 wide x 24mm deep

#### Ordering Information

Description	Catalogue Number
Unloaded Keystone Faceplate, 50x50, Bright White	6690 2 675-00
Unloaded Keystone Faceplate, 50x50, White	6690 2 675-01
Unloaded Keystone Faceplate, 50x50, Black	6690 2 675-02
Unloaded Keystone Faceplate, 50x50, Grey	6690 2 675-03

### TrueNet® 80x80mm European Faceplate

80x80 faceplate for use with above 50x50 faceplates.



#### Dimensions

80 high x 80 wide x 8mm deep

#### Ordering Information

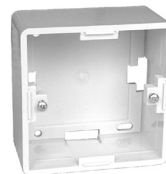
Description	Catalogue Number
Faceplate, 80x80, Bright White	6690 3 725-00
Faceplate, 80x80, White	6690 3 725-01
Faceplate, 80x80, Black	6690 3 725-02
Faceplate, 80x80, Grey	6690 3 725-03

# Work Area

## Adaptors, Faceplates & Accessories

### TrueNet® Back Boxes for European Outlets

The back box for surface mounting is designed for surface installations of ADC KRONE's flush mounted, wall duct outlets and trunking.



#### Dimensions

81 high x 81 wide x 42mm deep

#### Ordering Information

Description	Catalogue Number
Back Box, Single Gang Ivory	6690 1 525-02
Back Box, Single Gang Pure White	6690 1 525-03

### TrueNet® 45x45 Adaptors and Faceplate

Used to accommodate Category 5e and Category 6 RJ45 keystone jacks. Adaptors come complete with integrated dust protection.

1 x 6690 1 825-00 } fit into the 45x45 faceplate 6690 3 745-01  
 2 x 6690 1 825-10\*

\*Not suitable for use with Category 6 KM8® STP jack



#### Ordering Information

Description	Catalogue Number
Adaptor 22.5x45mm, Single, White	6690 1 825-10
Adaptor 45x45mm, Single, White	6690 1 825-00
Unloaded Faceplate, 45x45mm, White	6690 3 745-01

### Converters

These products are an ideal way to integrate PBX or other voice circuits into a standard structured cabling system.



#### Ordering Information

Description	Catalogue Number
Converter RJ-K PABX Master	6536 1 601-16
Converter RJ-K Full Master	6536 1 601-17
Converter RJ-K Secondary Master	6536 1 601-18
RJ-K Outlet Flying Lead Converter	6536 1 720-11
RJ-K Outlet Flying Lead Converter (258A Secondary)	6536 1 720-12
RJ-K Outlet Flying Lead Converter (ISDN)	6536 1 720-74