



Accessories for Overvoltage Protection



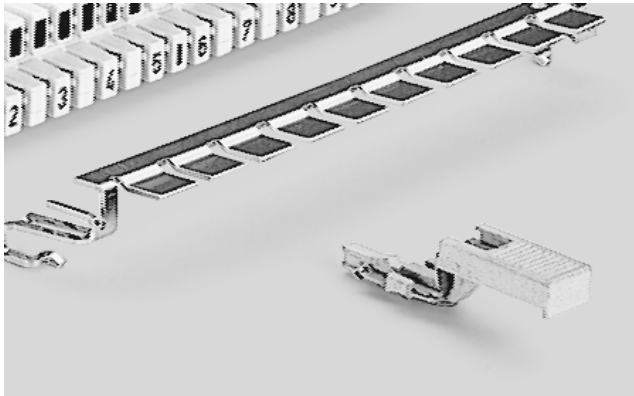
Automatic tester for protection devices

Portable ComProtect test device for measuring tolerance limits, interruptions and short-circuits in protection circuits. Automatic measurement of wall positions of the adapter used. Visual and audible fault signals. Supplied in a case.

Dimensions: 170 x 400 x 70mm



Order data:	Order No.	Description	Weight/Pack	Pack
	5909 1 302-00	ComProtect test device	5.000kg	1 piece
	5909 1 303-00	LSA-PLUS 2/10 adapter for the portable ComProtect test device with a slot for LSA-PLUS magazines 2/10 and 1-pair ComProtect protection plugs	0.750kg	1 piece
	5909 1 306-00	LSA-PLUS NT adapter for the portable ComProtect test device with a slot for LSA-PLUS NT magazines and 1-pair NT protection plugs	0.750kg	1 piece
	5909 1 307-00	LSA-PLUS 2/7 adapter for the portable ComProtect test device with a slot for LSA-PLUS magazines 2/7	0.750kg	1 piece
	5909 1 304-00	Software for A46-K software and adapter cable for the portable ComProtect test device for statistic measured-value acquisition and evaluation on the PC	0.750kg	1 piece

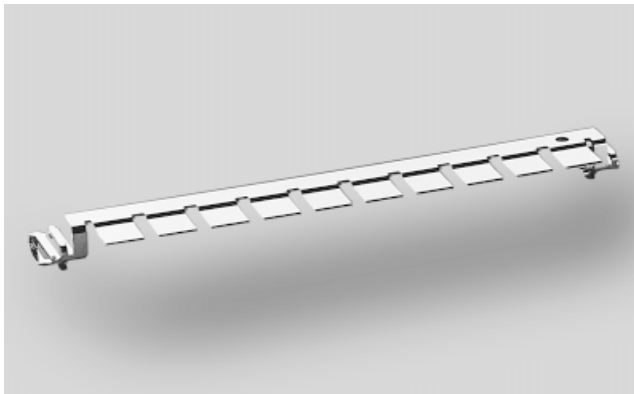


1-pair earth plug for LSA-PLUS®

For direct surge-current earthing of LSA-PLUS / PROFIL disconnection, switching and connection modules via the earth bar 2/8 or 2/10. In the LSA PROFIL system, earth clips 6089 2 122-00 are necessary (2 for each module).

Packaging unit: 10 pieces, incl. 1 earth bar 2/10

Order data:	Order No.	Description	Weight/Pack	Pack
	5909 1 112-00	2/1 CP GZA1	0.060kg	1 set



Earth bar for LSA-PLUS®, Series 2

Series A, B, C, D and H. Provides an earth connection between the ComProtect protection plugs and the distribution frame. One earth bar 2/10 is included in a (10-piece) set of ComProtect protection plugs (series A, B, C, D and H).

Order data:	Order No.	Description	Weight/Pack	Pack
	5909 3 041-00	Earth bar 2/10 for 10-pair modules	0.010kg	1 piece
	5909 3 042-00	Earth bar 2/8 for 8-pair modules	0.008kg	1 piece



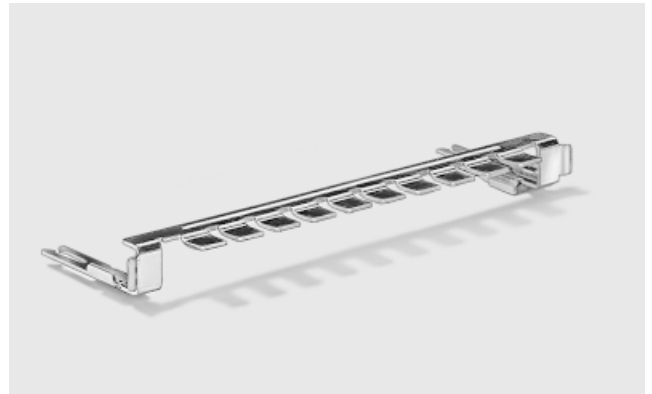


Accessories for Overvoltage Protection



Earth bar for LSA-PLUS® NT

Earth connection for 1-pair protection plug in the LSA-PLUS NT distributor system for 10 or 8 pairs between the protection plugs and the distribution frame. One earth bar is included in a set of NTP protection plugs.

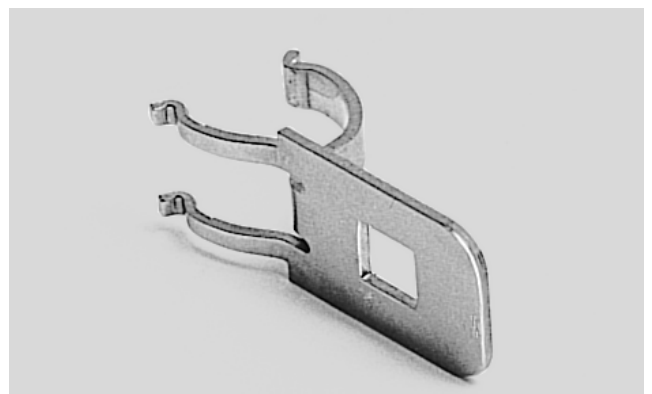


Order data:	Order No.	Description	Weight/Pack	Pack
	7019 3 017-00	Earth bar NTP/10 earth connection for 1-pair protection plug in the LSA-PLUS NT distributor system, 10 pairs	0.010kg	1 piece
	7019 3 016-00	Earth bar NTP/8 earth connection for 1-pair protection plug in the LSA-PLUS NT distributor system, 8 pairs	0.008kg	1 piece

Earth clip

Provides the contact between the earth bar 2/8 or 2/10. This clip is required when protection devices are used with LSA PROFIL modules Series 2 mounted on 12mm PROFIL rods.

Also refer to chapter 5.7 "LSA-PLUS/PROFIL Accessories".



Order data:	Order No.	Description	Weight/Pack	Pack
	6089 2 122-00	Earth clip	0.055kg	20 pieces



Fail-safe contacts

Fail-safe for overvoltage protection magazines 2/10 or 2/8 with 8 x 6 mm GDTs. For thermal overload protection in the event of overheating. Only for use in conjunction with metal-ceramic-type GDTs.

Order data:	Order No.	Description	Weight/Pack	Pack
	6417 2 010-00	Thermal protection spring		1 piece



Magazine cover

Transparent cover for overvoltage protection magazines 2/10 with GDTs 8 x 6 and 8 x 13.

Order data:	Order No.	Description	Weight/Pack	Pack
	6417 3 022-01	Magazine cover	0.005kg	1 piece

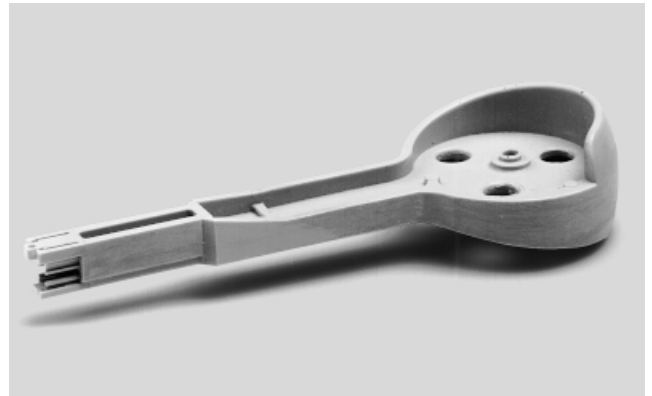


Accessories for Overvoltage Protection



Insertion tool ComProtect® H

For wire termination on LSA-PLUS / PROFIL modules with fitted ComProtect, type H, plugs.
One CP H insertion tool is included in the ComProtect H packaging unit (with 100 protection plugs).



Order data:	Order No.	Description	Weight/Pack	Pack
	6417 3 117-00	Insertion tool CP H	0.023kg	1 piece

Fail-safe ring for MDF 71 magazines

Fail-safe for magazines 71/4 AT or 71/5 AT in MDF 71; for use only in conjunction with metal-ceramic-type GDTs (MK, 8 x 6).



Order data:	Order No.	Description	Weight/Pack	Pack
	6709 3 003-01	Fail-safe ring		1 piece



2-pole overvoltage arrester

Gas-filled overvoltage arrester (2-pole), type 8 x 6 (ceramic) 10 KA/10 A, as an effective form of protection for a large variety of applications. 20 GDTs are necessary for 10 pairs. Fail-safe contacts are optional and can also be provided.

Order data:	Order No.	Description	Weight/Pack	Pack
	6717 3 341-00	8 x 6, MK, 90V 20 KA/20 A	0.014kg	1 piece
	6717 3 343-00	8 x 6, MK, 230V 20 KA/20 A	0.014kg	1 piece
	6717 3 343-01	8 x 6, MK, 230V 10 KA/10 A	0.014kg	1 piece
	6717 3 344-00	8 x 6, MK, 350V 20 KA/20 A	0.014kg	1 piece





Accessories for Overvoltage Protection



3-pole overvoltage arrester

Gas-filled overvoltage arrester (3-pole) with fail-safe, type 8 x 13 (ceramic) 5 KA/5 A, as an effective form of 3-point protection for a large variety of applications. 10 GDTs are necessary for 10 pairs.



Order data:	Order No.	Description	Weight/Pack	Pack
	6717 3 503-00	8 x 13, MK, 230V without fail-safe	0.024kg	1 piece
	6717 3 504-00	8 x 13, MK, 350V without fail-safe	0.024kg	1 piece
	6717 3 513-00	8 x 13, MK, 230V with fail-safe	0.024kg	1 piece
	6717 3 514-00	8 x 13, MK, 350V with fail-safe	0.024kg	1 piece

Test cord (7052), 1-pair

For testing on LSA-PLUS/PROFIL with ComProtect (versions A, B and H) installed. The test plug is directly inserted via spring pins into the unconnected or (up to 0.65mm in diameter) connected LSA-PLUS Series 2 contacts. With two sockets, 4mm in diameter, at the other end of the cord.



Order data:	Order No.	Description	Weight/Pack	Pack
	6089 2 141-00	Test cord (7052), 1-pair	0.040kg	1 piece



Test cord for ComProtect® H

For measuring and testing with ComProtect, version H, installed. For measuring in both line directions, the plug is inserted into the measuring point of ComProtect H. With two banana sockets.

Order data:	Order No.	Description	Weight/Pack	Pack
	5909 2 301-00	Test cord CP H	0.040kg	1 piece