

AMP NETCONNECT Surface Raceway System



AMP NETCONNECT Surface Raceway System

TABLE OF CONTENTS

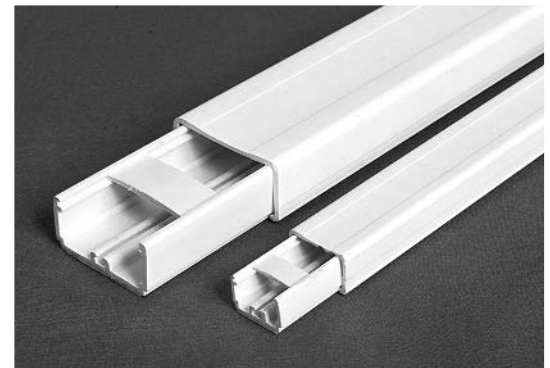
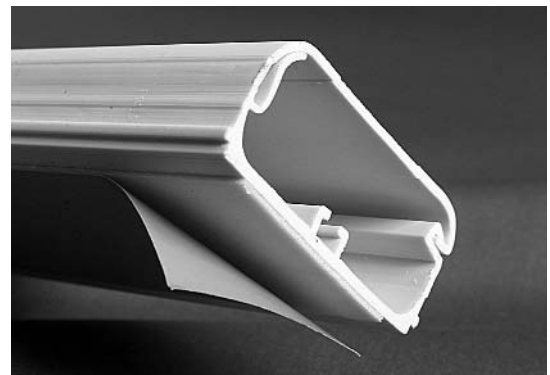
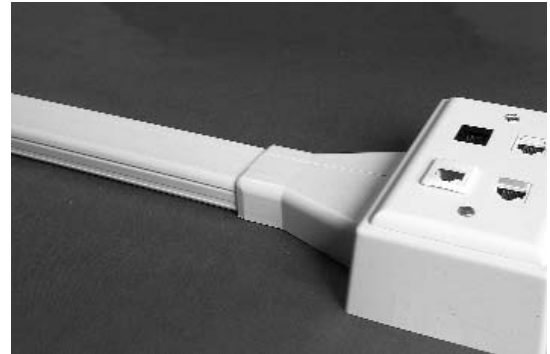
One-piece Surface Mount Raceway Duct	2
Two-piece Surface Mount Raceway Duct	3
Raceway Duct Accessories	4
Surface Boxes	8
DEK Cross-reference Part Numbers	9

AMP NETCONNECT surface raceway products are available as a two piece (base and cover) and as a one piece with hinged latching.

Each version can be applied to power applications as well as for low voltage circuits. When used for power applications, the raceway base must be mechanically mounted at least once every four (4) feet (minimum 2 screws per length). The screws must be #8 or larger with a head that will not cut or catch the wire. Also, each fitting (elbow, Tee, etc.) must have a UL strap to meet UL compliance.

A center channel molded into each version of the surface raceway provides the means to connect additional lengths and fittings. The same channel allows for installation of a divider strip thereby enabling both power and communications cables to coexist in the 1.5 and 2.5 inch raceway.

A complete line of fittings are available for both raceway types to facilitate routing cables and wires to meet the needs of each unique installation.



Surface Mount Raceway Duct

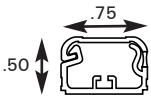


One-Piece Latching Duct

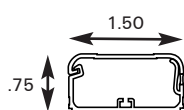
Product Facts

- :: One-piece duct with flexible hinge
- :: UL Listed 94V-0 PVC, UL rated to 600 V
- :: Fastening system uses ultra-high performance closed cell foam with pressure sensitive adhesive
- :: Quick and easy installation: peel protective backing and press firmly in place
- :: Living hinge can be opened and closed repeatedly without cracking
- :: Positive lock prevents accidental opening on impact
- :: Complete line of fittings to facilitate cable routing

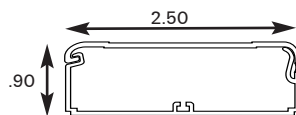
3/4" One-Piece Duct



1 1/2" One-Piece Duct



2 1/2" One-Piece Duct



Description	Duct Size	Length	Part Number	Package Qty.
One-Piece Latching Duct	3/4 in	6 ft	1639289-X	
One-Piece Latching Duct	3/4 in	8 ft	1639290-X	
One-Piece Latching Duct	1 1/2 in	6 ft	1639286-X	20
One-Piece Latching Duct	1 1/2 in	8 ft	1639287-X	
One-Piece Latching Duct	2 1/2 in	6 ft	1639291-X	
One-Piece Latching Duct	2 1/2 in	8 ft	1639292-X	

X denotes color, -1=Almond, 3=White, -6=Ivory, 1- -1= Electrical Ivory.

Raceway Fill Capacity (based on 40% fill)

Cable Type	Cable Diameter	One-Piece	One-Piece	One-Piece
		3/4 in ~40% Fill	1 1/2 in ~40% Fill	2 1/2 in ~40% Fill
Cat 5e 25-Pair UTP	0.500	-	1	2
Cat 5e UTP Riser	0.200	2	7	17
Cat 5e UTP Plenum	0.190	2	8	19
Cat 6 UTP Riser	0.230	1	5	12
Cat 6 UTP Plenum	0.206	1	6	16
Cat 6 F/UTP Riser	0.300	-	3	7
Cat 6 F/UTP Plenum	0.300	-	3	7
2-Pair UTP (24 AWG)	0.165	2	7	17
2 Fiber Zipcord Optical Fiber	0.11 x 0.22	2	9	22
2 Fiber (DUAL) Optical Fiber	0.190	2	8	19
4 Fiber (QUAD) Optical Fiber	0.190	2	8	19
RG-6/U Coaxial Cable	0.275	1	3	9
RG-59/U Coaxial Cable	0.245	1	4	11

Surface Mount Raceway Duct

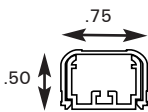


Two-Piece Duct

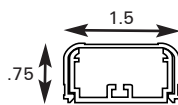
Product Facts

- :: Two-piece duct raceway (base and cover)
- :: UL Listed 94V-0 PVC, UL Rated 600 V
- :: Fastening system uses ultra-high performance closed cell foam with pressure sensitive adhesive
- :: Quick and easy installation: peel protective backing and press firmly in place
- :: Positive lock prevents accidental opening on impact
- :: Complete line of fittings to facilitate cable routing

3/4" Two-Piece Duct



1 1/2" Two-Piece Duct



Description	Duct Size	Length	Part Number	Package Qty.
Two-Piece Duct	3/4 in	6 ft	1639288-X	20
Two-Piece Duct	1 1/2 in	6 ft	1639285-X	20

X denotes color: -1 = Almond, -3 = White, -6 = Ivory, 1--1 = Electrical Ivory

Raceway Fill Capacity (based on 40% fill)

Cable Type	Cable Diameter	Two-Piece	Two-Piece
		3/4 in ~40% Fill	1 1/2 in ~40% Fill
Cat 5e 25-Pair UTP	0.500	-	1
Cat 5e UTP Riser	0.200	1	6
Cat 5e UTP Plenum	0.190	1	7
Cat 6 UTP Riser	0.230	1	4
Cat 6 UTP Plenum	0.206	1	6
Cat 6 F/UTP Riser	0.300	-	2
Cat 6 F/UTP Plenum	0.300	-	2
2-Pair UTP (24 AWG)	0.165	2	9
2 Fiber Zipcord Optical Fiber	0.11 x 0.22	2	8
2 Fiber (DUAL) Optical Fiber	0.190	1	7
4 Fiber (QUAD) Optical Fiber	0.190	1	7
RG-6/U Coaxial Cable	0.275	-	3
RG-59/U Coaxial Cable	0.245	1	4

Raceway Duct Accessories

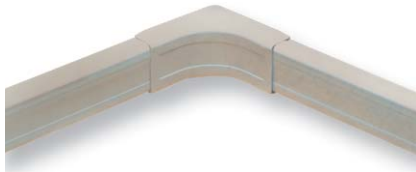
1 1/2 in Bend Radius Flat Elbow Cover Kit



Duct Size	Part Number	Package Qty.
1 1/2 in	1639304-X	10

X denotes color: -1 = Almond, -3 = White, -6 = Ivory, 1--1 = Electrical Ivory.

1 1/2 in Bend Radius Internal Elbow Cover Kit



Duct Size	Part Number	Package Qty.
1 1/2 in	1639306-X	10

X denotes color: -1 = Almond, -3 = White, -6 = Ivory, 1--1 = Electrical Ivory

1 1/2 in Bend Radius External Elbow Cover Kit



Duct Size	Part Number	Package Qty.
1 1/2 in	1639305-X	10

X denotes color: -1 = Almond, -3 = White, -6 = Ivory, 1--1 = Electrical Ivory

1 1/2 in Bend Radius Tee Cover Kit



Duct Size	Part Number	Package Qty.
1 1/2 in	1639303-X	10

X denotes color: -1 = Almond, -3 = White, -6 = Ivory, 1--1 = Electrical Ivory

Product Facts

- :: Provides a complete line of fittings to facilitate cable routing
- :: UL Listed 94V-0 ABS/PC, UL Rated 600 V
- :: Compatible with both one and two piece surface raceway systems
- :: 1 1/2" bend radius fittings comply with TIA/EIA-B.1 requirements for 2 and 4-fiber horizontal fiber cables and most 4-pair UTP cables with the minimum bend radius requirement of 4X the cable diameter.

Raceway Duct Accessories

Splice Cover Kits



Duct Size	Part Number	Package Qty.
3/4 in	1639307-X	10
1 1/2 in	1639325-X	10
2 1/2 in	1639316-X	5

X denotes color: -1 = Almond, -3 = White, -6 = Ivory, 1--1 = Electrical Ivory

Product Facts

- :: Provides a complete line of fittings to facilitate cable routing
- :: UL Listed 94V-0 ABS/PC, UL Rated 600 V
- :: Compatible with both one and two piece surface raceway systems

Tee Cover Kits



Duct Size	Part Number	Package Qty.
3/4 in	1639309-X	10
1 1/2 in	1639293-X	10
2 1/2 in	1639317-X	5

X denotes color: -1 = Almond, -3 = White, -6 = Ivory, 1--1 = Electrical Ivory

Internal Elbow Cover Kits



Duct Size	Part Number	Package Qty.
3/4 in	1639312-X	10
1 1/2 in	1639296-X	10
2 1/2 in	1639320-X	5

X denotes color: -1 = Almond, -3 = White, -6 = Ivory, 1--1 = Electrical Ivory

Flat Elbow Cover Kits



Duct Size	Part Number	Package Qty.
3/4 in	1639310-X	10
1 1/2 in	1639294-X	10
2 1/2 in	1639318-X	5

X denotes color: -1 = Almond, -3 = White, -6 = Ivory, 1--1 = Electrical Ivory

Raceway Duct Accessories

External Elbow Cover Kits



Duct Size	Part Number	Package Qty.
3/4 in	1639311-X	10
1 1/2 in	1639295-X	10
2 1/2 in	1639319-X	5

X denotes color: -1 = Almond, -3 = White, -6 = Ivory, 1--1 = Electrical Ivory

Product Facts

- :: Provides a complete line of fittings to facilitate cable routing
- :: UL Listed 94V-0 ABS/PC, UL Rated 600 V
- :: Compatible with both one and two piece surface raceway systems

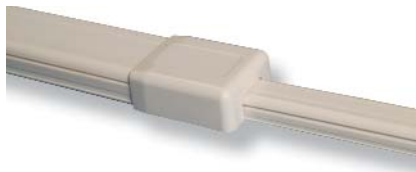
End Cap



Duct Size	Part Number	Package Qty.
3/4 in	1639313-X	10
1 1/2 in	1639297-X	10
2 1/2 in	1639323-X	5

X denotes color: -1 = Almond, -3 = White, -6 = Ivory, 1--1 = Electrical Ivory

End Cap Reducer



Duct Size	Part Number	Package Qty.
1 1/2 in to 3/4 in	1639298-X	10
2 1/2 in to 3/4 in	1639321-X	5
2 1/2 in to 1 1/2 in	1639322-X	5

X denotes color: -1 = Almond, -3 = White, -6 = Ivory, 1--1 = Electrical Ivory

Ceiling Cap

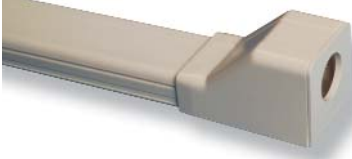


Duct Size	Part Number	Package Qty.
3/4 in	1639314-X	10
1 1/2 in	1639301-X	10

X denotes color: -1 = Almond, -3 = White, -6 = Ivory, 1--1 = Electrical Ivory

Raceway Duct Accessories

Conduit Adapter



Duct Size	Part Number	Package Qty.
1 1/2 in to 1/2 in	1639299-X	10

X denotes color: -1 = Almond, -3 = White, -6 = Ivory, 1--1 = Electrical Ivory

Outlet Box Adapter



Duct Size	Part Number	Package Qty.
1 1/2 in	1639300-X	10

X denotes color: -1 = Almond, -3 = White, -6 = Ivory, 1--1 = Electrical Ivory

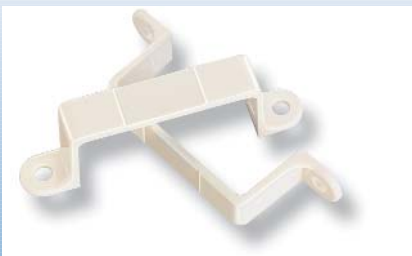
Wire Retainers



Duct Size	Part Number	Package Qty.
3/4 in	1639308-3	10
1 1/2 in	1639326-X	10

X denotes color: -1 = Almond, -3 = White, -6 = Ivory, 1--1 = Electrical Ivory

UL Strap



Duct Size	Part Number	Package Qty.
3/4 in	1639315-X	10
1 1/2 in	1639302-X	10
2 1/2 in	1639324-X	10

X denotes color: -1 = Almond, -3 = White, -6 = Ivory, 1--1 = Electrical Ivory

Product Facts

- :: Provides a complete line of fittings to facilitate cable routing
- :: UL Listed 94V-0 ABS/PC, UL Rated 600 V
- :: Compatible with both one and two piece surface raceway systems
- :: Conduit Adapter adapts 1/2-inch or GREENFIELD conduit to 1 1/2-inch raceway
- :: UL Straps used over fittings to meet code

GREENFIELD is a trademark of Greenfield Industries, Inc..

Surface Boxes

Two-Piece Surface Boxes



Product Facts

- :: UL Listed 94V-0 ABS/PC, UL Rated 600 V
- :: Compatible with both one and two piece surface raceway systems

Description	Box Depth	Part Number	Package Qty.
Two-Piece Single Gang	1"	1639327-X	
Two-Piece Single Gang	1.5"	1639329-X	
Two-Piece Single Gang	2"	1639328-X	1
Two-Piece Double Gang	2"	1639331-X	
Round Junction Box	1"	1639330-X	

X denotes color: -1 = Almond, -3 = White, -6 = Ivory, 1--1 = Electrical Ivory

One-piece Surface Boxes



Product Facts

- :: For use with WIREMOLD and PANDUIT raceway
- :: Not compatible with AMP NETCONNECT Surface Raceway

Description	Box Depth	Part Number	Package Qty.
Single Gang	1 3/4"	558251-X	1
Double Gang	2"	569499-X	1

X denotes color: -1 = Almond, -2 = Black, -3 = White, -4 = Gray, 1-1 = Electrical Ivory

WIREMOLD is a trademark of Wiremold/Legrand. PANDUIT is a trademark of Panduit Corporation.

DEK Cross-Reference Part Numbers

Surface Raceway

Tyco Electronics Part Number	DEK Part Number	Description	Color	Pkg. Qty.
1639285-6	DEK-042-0006	1 1/2 Raceway, 2 PC, 6'	IVORY	20
1639285-3	DEK-042-0006W	1 1/2 Raceway, 2 PC, 6'	WHITE	20
1639286-6	DEK-042-LD00	1 1/2 Raceway, 1 PC, 6'	IVORY	20
1639286-1	DEK-042-LD00D	1 1/2 Raceway, 1 PC, 6'	ALMOND	20
1-1639286-1	DEK-042-LD00G	1 1/2 Raceway, 1 PC, 6'	Elec. Ivory	20
1639286-3	DEK-042-LD00W	1 1/2 Raceway, 1 PC, 6'	WHITE	20
1639287-6	DEK-042-LD08	1 1/2 Raceway, 1 PC, 8'	IVORY	20
1639287-1	DEK-042-LD08D	1 1/2 Raceway, 1 PC, 8'	ALMOND	20
1-1639287-1	DEK-042-LD08G	1 1/2 Raceway, 1 PC, 8'	Elec. Ivory	20
1639287-3	DEK-042-LD08W	1 1/2 Raceway, 1 PC, 8'	WHITE	20
1639288-6	DEK-043-0006	3/4 Raceway, 2 PC, 6'	IVORY	20
1639288-1	DEK-043-0006D	3/4 Raceway, 2 PC, 6'	ALMOND	20
1639288-3	DEK-043-0006W	3/4 Raceway, 2 PC, 6'	WHITE	20
1639289-6	DEK-043-LD00	3/4 Raceway, 1 PC, 6'	IVORY	20
1639289-1	DEK-043-LD00D	3/4 Raceway, 1 PC, 6'	ALMOND	20
1-1639289-1	DEK-043-LD00G	3/4 Raceway, 1 PC, 6'	Elec. Ivory	20
1639289-3	DEK-043-LD00W	3/4 Raceway, 1 PC, 6'	WHITE	20
1639290-6	DEK-043-LD08	3/4 Raceway, 1 PC, 8'	IVORY	20
1639290-1	DEK-043-LD08D	3/4 Raceway, 1 PC, 8'	ALMOND	20
1-1639290-1	DEK-043-LD08G	3/4 Raceway, 1 PC, 8'	Elec. Ivory	20
1639290-3	DEK-043-LD08W	3/4 Raceway, 1 PC, 8'	WHITE	20
1639291-6	DEK-045-LD00	2 1/2 Raceway, 1 PC, 6'	IVORY	20
1639291-1	DEK-045-LD00D	2 1/2 Raceway, 1 PC, 6'	ALMOND	20
1-1639291-1	DEK-045-LD00G	2 1/2 Raceway, 1 PC, 6'	Elec. Ivory	20
1639291-3	DEK-045-LD00W	2 1/2 Raceway, 1 PC, 6'	WHITE	20
1639292-6	DEK-045-LD08	2 1/2 Raceway, 1 PC, 8'	IVORY	20
1639292-1	DEK-045-LD08D	2 1/2 Raceway, 1 PC, 8'	ALMOND	20
1-1639292-1	DEK-045-LD08G	2 1/2 Raceway, 1 PC, 8'	Elec. Ivory	20
1639292-3	DEK-045-LD08W	2 1/2 Raceway, 1 PC, 8'	WHITE	20

DEK Cross-Reference Part Numbers

.75" Fittings

1639307-6	DEK-043-0015/10	3/4 Splice Cover Kit	IVORY	10
1639307-1	DEK-043-0015D/10	3/4 Splice Cover Kit	ALMOND	10
1-1639307-1	DEK-043-0015G/10	3/4 Splice Cover Kit	Elec. Ivory	10
1639307-3	DEK-043-0015W/10	3/4 Splice Cover Kit	WHITE	10
1639308-3	DEK-043-0018W/10	3/4 Wire Retainer	WHITE	10
1639309-6	DEK-043-0021/10	3/4 Tee Cover Kit	IVORY	10
1-1639309-1	DEK-043-0021G/10	3/4 Tee Cover Kit	Elec. Ivory	10
1639309-3	DEK-043-0021W/10	3/4 Tee Cover Kit	WHITE	10
1639310-6	DEK-043-0025/10	3/4 Flat Elbow Cover Kit	IVORY	10
1639310-1	DEK-043-0025D/10	3/4 Flat Elbow Cover Kit	ALMOND	10
1-1639310-1	DEK-043-0025G/10	3/4 Flat Elbow Cover Kit	Elec. Ivory	10
1639310-3	DEK-043-0025W/10	3/4 Flat Elbow Cover Kit	WHITE	10
1639311-6	DEK-043-0029/10	3/4 External Elbow Cover Kit	IVORY	10
1-1639311-1	DEK-043-0029G/10	3/4 External Elbow Cover Kit	Elec. Ivory	10
1639311-3	DEK-043-0029W/10	3/4 External Elbow Cover Kit	WHITE	10
1639312-6	DEK-043-0033/10	3/4 Internal Elbow Cover Kit	IVORY	10
1-1639312-1	DEK-043-0033G/10	3/4 Internal Elbow Cover Kit	Elec. Ivory	10
1639312-3	DEK-043-0033W/10	3/4 Internal Elbow Cover Kit	WHITE	10
1639313-6	DEK-043-0036/10	3/4 End Cap	IVORY	10
1639313-1	DEK-043-0036D/10	3/4 End Cap	ALMOND	10
1-1639313-1	DEK-043-0036G/10	3/4 End Cap	Elec. Ivory	10
1639313-3	DEK-043-0036W/10	3/4 End Cap	WHITE	10
1639314-6	DEK-043-0050/10	3/4 Ceiling Cap	IVORY	10
1639314-1	DEK-043-0050D/10	3/4 Ceiling Cap	ALMOND	10
1-1639314-1	DEK-043-0050G/10	3/4 Ceiling Cap	Elec. Ivory	10
1639314-3	DEK-043-0050W/10	3/4 Ceiling Cap	WHITE	10
1639315-6	DEK-043-0060/10	3/4 UL Strap	IVORY	10
1-1639315-1	DEK-043-0060G/10	3/4 UL Strap	Elec. Ivory	10
1639315-3	DEK-043-0060W/10	3/4 UL Strap	WHITE	10

DEK Cross-Reference Part Numbers

1.5" Fittings

Tyco Electronics Part Number	DEK Part Number	Description	Color	Pkg. Qty.
1639293-6	DEK-042-0021/10	1-1/2 Tee Cover Kit	IVORY	10
1-1639293-1	DEK-042-0021G/10	1-1/2 Tee Cover Kit	Elec. Ivory	10
1639293-3	DEK-042-0021W/10	1-1/2 Tee Cover Kit	WHITE	10
1639294-6	DEK-042-0025/10	1-1/2 Flat Elbow Cover Kit	IVORY	10
1639294-1	DEK-042-0025D/10	1-1/2 Flat Elbow Cover Kit	ALMOND	10
1-1639294-1	DEK-042-0025G/10	1-1/2 Flat Elbow Cover Kit	Elec. Ivory	10
1639294-3	DEK-042-0025W/10	1-1/2 Flat Elbow Cover Kit	WHITE	10
1639295-6	DEK-042-0029/10	1-1/2 External Elbow Cover Kit	IVORY	10
1639295-1	DEK-042-0029D/10	1-1/2 External Elbow Cover Kit	ALMOND	10
1-1639295-1	DEK-042-0029G/10	1-1/2 External Elbow Cover Kit	Elec. Ivory	10
1639295-3	DEK-042-0029W/10	1-1/2 External Elbow Cover Kit	WHITE	10
1639296-6	DEK-042-0033/10	1-1/2 Internal Elbow Cover Kit	IVORY	10
1639296-1	DEK-042-0033D/10	1-1/2 Internal Elbow Cover Kit	ALMOND	10
1-1639296-1	DEK-042-0033G/10	1-1/2 Internal Elbow Cover Kit	Elec. Ivory	10
1639296-3	DEK-042-0033W/10	1-1/2 Internal Elbow Cover Kit	WHITE	10
1639297-6	DEK-042-0036/10	1-1/2 End Cap	IVORY	10
1-1639297-1	DEK-042-0036G/10	1-1/2 End Cap	Elec. Ivory	10
1639297-3	DEK-042-0036W/10	1-1/2 End Cap	WHITE	10
1639298-6	DEK-042-0036H/10	1-1/2 to 3/4 End Cap Reducer	IVORY	10
1-1639298-1	DEK-042-0036HG/10	1-1/2 to 3/4 End Cap Reducer	Elec. Ivory	10
1639298-3	DEK-042-0036HW/10	1-1/2 to 3/4 End Cap Reducer	WHITE	10
1639299-6	DEK-042-0044/10	1-1/2 Conduit Adapter	IVORY	10
1-1639299-1	DEK-042-0044G/10	1-1/2 Conduit Adapter	Elec. Ivory	10
1639299-3	DEK-042-0044W/10	1-1/2 Conduit Adapter	WHITE	10
1639300-6	DEK-042-0048/10	1-1/2 Outlet Box Adapter	IVORY	10
1-1639300-1	DEK-042-0048G/10	1-1/2 Outlet Box Adapter	Elec. Ivory	10
1639300-3	DEK-042-0048W/10	1-1/2 Outlet Box Adapter	WHITE	10
1639301-6	DEK-042-0050/10	1-1/2 Ceiling Cap	IVORY	10
1639301-1	DEK-042-0050D/10	1-1/2 Ceiling Cap	ALMOND	10
1-1639301-1	DEK-042-0050G/10	1-1/2 Ceiling Cap	Elec. Ivory	10
1639301-3	DEK-042-0050W/10	1-1/2 Ceiling Cap	WHITE	10
1639302-6	DEK-042-0060/10	1-1/2 ULStrap	IVORY	10
1-1639302-1	DEK-042-0060G/10	1-1/2 ULStrap	Elec. Ivory	10
1639302-3	DEK-042-0060W/10	1-1/2 ULStrap	WHITE	10
1639303-6	DEK-042-F021/10	1-1/2 Bend Radius Compliant Tee Cover	IVORY	10
1-1639303-1	DEK-042-F021G/10	1-1/2 Bend Radius Compliant Tee Cover	Elec. Ivory	10
1639303-3	DEK-042-F021W/10	1-1/2 Bend Radius Compliant Tee Cover	WHITE	10
1639304-6	DEK-042-F025/10	1-1/2 Bend Radius Compliant Flat Elbow	IVORY	10
1-1639304-1	DEK-042-F025G/10	1-1/2 Bend Radius Compliant Flat Elbow	Elec. Ivory	10
1639304-3	DEK-042-F025W/10	1-1/2 Bend Radius Compliant Flat Elbow	WHITE	10
1639305-6	DEK-042-F029/10	1-1/2 Bend Radius Compliant External Elbow	IVORY	10
1-1639305-1	DEK-042-F029G/10	1-1/2 Bend Radius Compliant External Elbow	Elec. Ivory	10
1639305-3	DEK-042-F029W/10	1-1/2 Bend Radius Compliant External Elbow	WHITE	10
1639306-6	DEK-042-F033/10	1-1/2 Bend Radius Compliant Internal Elbow	IVORY	10
1639306-3	DEK-042-F033W/10	1-1/2 Bend Radius Compliant Internal Elbow	WHITE	10
1639325-6	DEK-042-0015/10	1-1/2 Splice Cover Kit	IVORY	10
1639325-1	DEK-042-0015D/10	1-1/2 Splice Cover Kit	ALMOND	10
1-1639325-1	DEK-042-0015G/10	1-1/2 Splice Cover Kit	Elec. Ivory	10
1639325-3	DEK-042-0015W/10	1-1/2 Splice Cover Kit	WHITE	10
1639326-6	DEK-042-0018/10	1-1/2 Wire Retainers	IVORY	10
1639326-3	DEK-042-0018W/10	1-1/2 Wire Retainers	WHITE	10

DEK Cross-Reference Part Numbers

2.5" Fittings

Tyco Electronics Part Number	DEK Part Number	Description	Color	Pkg. Qty.
1639316-6	DEK-045-0015/5	2-1/2 Spilce Cover Kit	IVORY	5
1639316-1	DEK-045-0015D/5	2-1/2 Spilce Cover Kit	ALMOND	5
1-1639316-1	DEK-045-0015G/5	2-1/2 Spilce Cover Kit	Elec. Ivory	5
1639316-3	DEK-045-0015W/5	2-1/2 Spilce Cover Kit	WHITE	5
1639317-1	DEK-045-0021D/5	2-1/2 Tee Cover Kit	ALMOND	5
1-1639317-1	DEK-045-0021G/5	2-1/2 Tee Cover Kit	Elec. Ivory	5
1639317-3	DEK-045-0021W/5	2-1/2 Tee Cover Kit	WHITE	5
1639318-6	DEK-045-0025/5	2-1/2 Flat Elbow Cover Kit	IVORY	5
1639318-1	DEK-045-0025D/5	2-1/2 Flat Elbow Cover Kit	ALMOND	5
1-1639318-1	DEK-045-0025G/5	2-1/2 Flat Elbow Cover Kit	Elec. Ivory	5
1639318-3	DEK-045-0025W/5	2-1/2 Flat Elbow Cover Kit	WHITE	5
1639319-6	DEK-045-0029/5	2-1/2 External Elbow Cover Kit	IVORY	5
1639319-1	DEK-045-0029D/5	2-1/2 External Elbow Cover Kit	ALMOND	5
1-1639319-1	DEK-045-0029G/5	2-1/2 External Elbow Cover Kit	Elec. Ivory	5
1639319-3	DEK-045-0029W/5	2-1/2 External Elbow Cover Kit	WHITE	5
1639320-6	DEK-045-0033/5	2-1/2 Internal Elbow Cover Kit	IVORY	5
1639320-1	DEK-045-0033D/5	2-1/2 Internal Elbow Cover Kit	ALMOND	5
1-1639320-1	DEK-045-0033G/5	2-1/2 Internal Elbow Cover Kit	Elec. Ivory	5
1639320-3	DEK-045-0033W/5	2-1/2 Internal Elbow Cover Kit	WHITE	5
1639321-6	DEK-045-0036-05/5	2-1/2 to 3/4 End Cap Reducer	IVORY	5
1-1639321-1	DEK-045-0036G-05/5	2-1/2 to 3/4 End Cap Reducer	Elec. Ivory	5
1639321-3	DEK-045-0036W-05/5	2-1/2 to 3/4 End Cap Reducer	WHITE	5
1639322-6	DEK-045-0036-1/5	2-1/2 to 1 1/2 End Cap Reducer	IVORY	5
1-1639322-1	DEK-045-0036G-1/5	2-1/2 to 1 1/2 End Cap Reducer	Elec. Ivory	5
1639322-3	DEK-045-0036W-1/5	2-1/2 to 1 1/2 End Cap Reducer	WHITE	5
1639323-6	DEK-045-0036/5	2-1/2 End Cap	IVORY	5
1-1639323-1	DEK-045-0036G/5	2-1/2 End Cap	Elec. Ivory	5
1639323-3	DEK-045-0036W/5	2-1/2 End Cap	WHITE	5
1639324-6	DEK-045-0060/10	2-1/2 UL STRAP	IVORY	10
1-1639324-1	DEK-045-0060G/10	2-1/2 UL STRAP	Elec. Ivory	10
1639324-3	DEK-045-0060W/10	2-1/2 UL STRAP	WHITE	10

Junction Boxes

Tyco Electronics Part Number	DEK Part Number	Description	Color	Pkg. Qty.
1639327-6	DEK-042-0070	1" Depth Tw o-piece Single Gang Box	IVORY	1
1639327-1	DEK-042-0070D	1" Depth Tw o-piece Single Gang Box	ALMOND	1
1-1639327-1	DEK-042-0070G	1" Depth Tw o-piece Single Gang Box	Elec. Ivory	1
1639327-3	DEK-042-0070W	1" Depth Tw o-piece Single Gang Box	WHITE	1
1639328-6	DEK-042-0071	2" Depth Tw o-piece Single Gang Box	IVORY	1
1639328-1	DEK-042-0071D	2" Depth Tw o-piece Single Gang Box	ALMOND	1
1-1639328-1	DEK-042-0071G	2" Depth Tw o-piece Single Gang Box	Elec. Ivory	1
1639328-3	DEK-042-0071W	2" Depth Tw o-piece Single Gang Box	WHITE	1
1639329-6	DEK-042-0075	1.5" Depth Tw o-piece Single Gang Box	IVORY	1
1639329-1	DEK-042-0075D	1.5" Depth Tw o-piece Single Gang Box	ALMOND	1
1-1639329-1	DEK-042-0075G	1.5" Depth Tw o-piece Single Gang Box	Elec. Ivory	1
1639329-3	DEK-042-0075W	1.5" Depth Tw o-piece Single Gang Box	WHITE	1
1639330-6	DEK-042-0043	1" Depth Round Single Gang Box	IVORY	1
1639330-1	DEK-042-0043D	1" Depth Round Single Gang Box	ALMOND	1
1-1639330-1	DEK-042-0043G	1" Depth Round Single Gang Box	Elec. Ivory	1
1639330-3	DEK-042-0043W	1" Depth Round Single Gang Box	WHITE	1
1639331-6	DEK-042-0046	2" Depth Tw o-piece Double Gang Box	IVORY	1
1639331-1	DEK-042-0046D	2" Depth Tw o-piece Double Gang Box	ALMOND	1
1-1639331-1	DEK-042-0046G	2" Depth Tw o-piece Double Gang Box	Elec. Ivory	1
1639331-3	DEK-042-0046W	2" Depth Tw o-piece Double Gang Box	WHITE	1

Tyco Electronics Corporation AMP NETCONNECT Global Offices:

North America

Harrisburg, PA, USA
Ph: +1-800-553-0938
Fx: +1-717-986-7406

Europe

Kessel-Lo, Belgium
Ph: +32-16-352-300
Fx: +32-16-352-353

Mid East & Africa

Cergy-Pontoise, France
Ph: +33-1-3420-2122
Fx: +33-1-3420-2268

Latin America

Buenos Aires, Argentina
Ph: +54-11-4733-2200
Fx: +54-11-4733-2282

Asia

Hongkong, China
Ph: +852-2735-1628
Fx: +852-2735-1625

Pacific

Sydney, Australia
Ph: +61-2-9407-2600
Fx: +61-2-9407-2519

www.ampnetconnect.com

Tyco Electronics Corporation AMP NETCONNECT North American Offices:

United States

Harrisburg, PA, USA
Ph: +1-800-553-0938
Fx: +1-717-986-7406
www.ampnetconnect.com

Canada

Markham, Ontario Canada
Ph: 905-474-6222
Fx: 905-474-5519



Our commitment. Your advantage.

Tyco Electronics, TE Logo, AMP, AMP NETCONNECT, NETCONNECT, and DEK are trademarks.

©Copyright 2007 Tyco Electronics Corporation – All rights reserved

3-1773447-9 – 05/07