

AMPTRAC

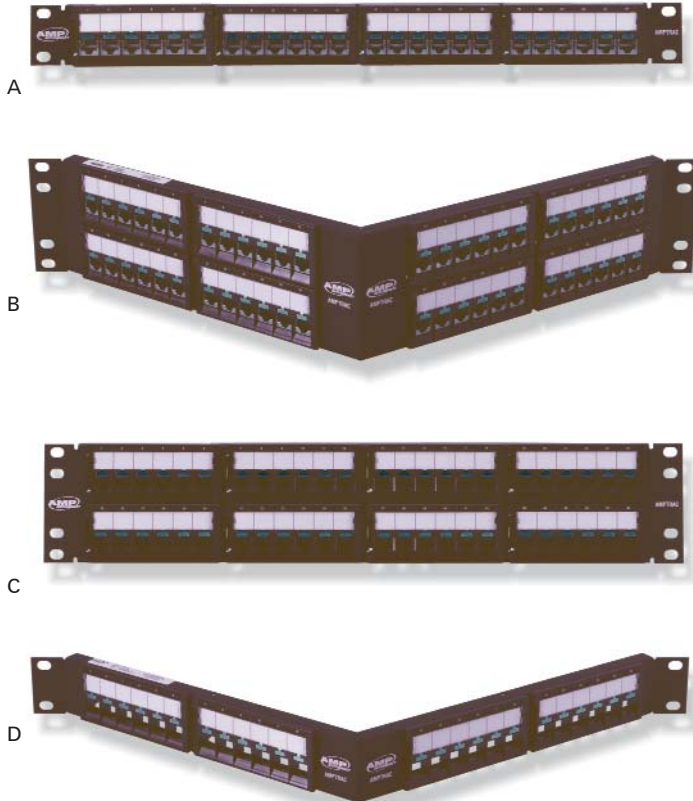


AMP NETCONNECT AMPTRAC Patch Panels



Patch Panels

Twisted Pair Patch Panels



Product Facts

- Incorporate integrated solid contacts with the panel for enhanced protection, appearance and reliability
- I/O connection made via 110 IDC punch down in the rear of patch panel, minimizing pre-planning and allowing for cables to be cut to length (1435844-X) or with 110 plug and play cable assembly (1933152-Y)
- Cost-effective solution for AMPTRAC Connectivity Management System ready solution - install AMPTRAC patch panels now and analyzer and software later
- Available in standard flush versions as well as angled versions for improved cable and space management
- Uses AMP NETCONNECT high-performance SL AMP-TWIST shielded 6A and Cat 6 UTP Modular Jacks
- Category 6A shielded supports 10 Gigabit transmission
- Category 6A and 6 Patch Panels come unloaded with Modular Jacks bagged separately for field termination with SL Series Modular Jack Termination Tool (see Chapter 1.7)
- SL Series Multimedia Patch Panels come unloaded and accept SL Series Jacks for custom configurations (accepts shielded or unshielded Jacks)

Description	Type	Height Rack Units (inches)	Figure	Part Number	
XG Cat 6A (Shielded)	Standard (Flush)	24-Port	1U (1.75")	A	1933331-1
		48-Port	2U (3.50")	-	1933332-1
	Angled	24-Port	1U (1.75")	-	1933333-1
		48-Port	2U (3.50")	B	1933334-1
Category 6 (Unshielded)	Standard (Flush)	24-Port	1U (1.75")	-	1933327-1
		48-Port	2U (3.50")	C	1933328-1
	Angled	24-Port	1U (1.75")	-	1933329-1
		48-Port	2U (3.50")	-	1933330-1
SL Series Multimedia (without jacks)	Standard (Flush)	24-Port	1U (1.75")	-	1933323-1
		48-Port	2U (3.50")	-	1933324-1
	Angled	24-Port	1U (1.75")	D	1933325-1
		48-Port	2U (3.50")	-	1933326-1

Note: Previous versions of AMPTRAC SL Patch Panels require I/O cable 1499656-X instead of New version 1933152-X.

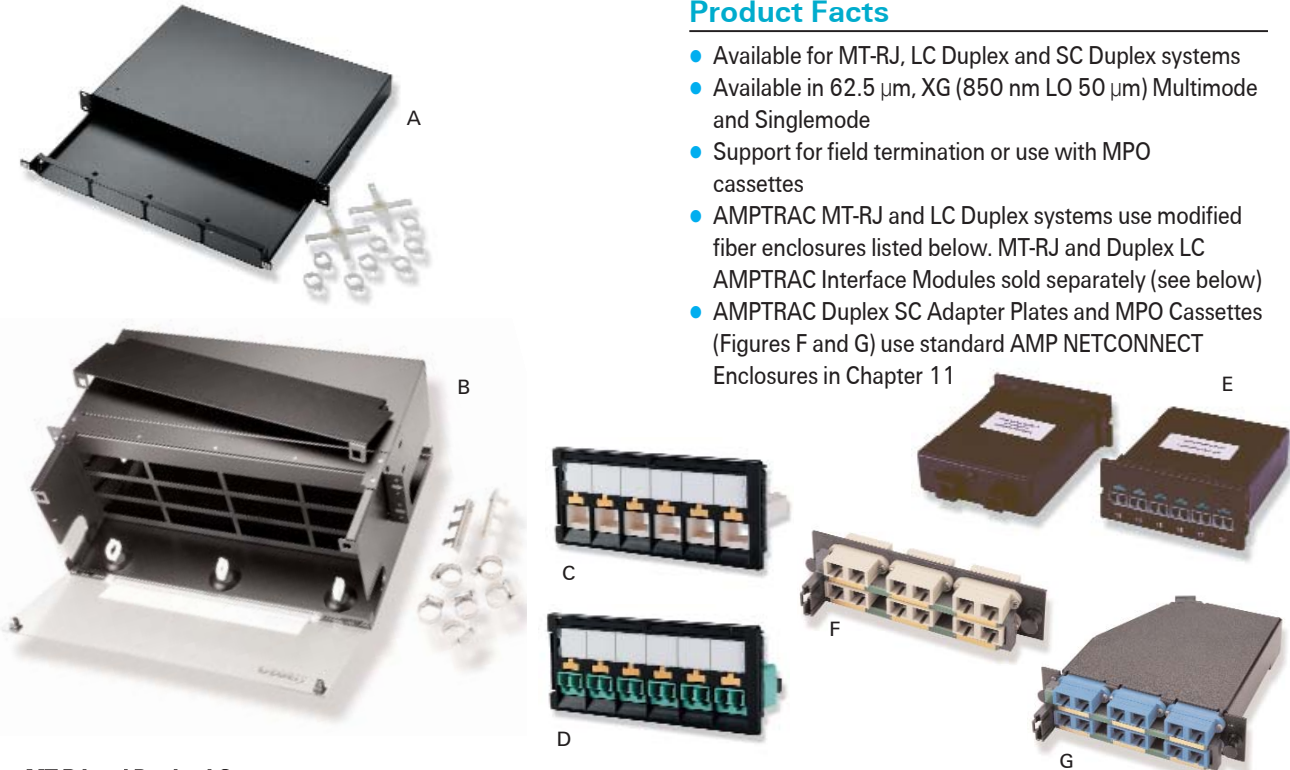
Cable Management Bar



Description	Part Number
Rear Cable Management Bar	557548-1
Cable Management Bar	1933425-1

AMPTRAC Optical Fiber Enclosures

Optical Fiber Patch Panels and Accessories



Product Facts

- Available for MT-RJ, LC Duplex and SC Duplex systems
- Available in 62.5 μm , XG (850 nm LO 50 μm) Multimode and Singlemode
- Support for field termination or use with MPO cassettes
- AMPTRAC MT-RJ and LC Duplex systems use modified fiber enclosures listed below. MT-RJ and Duplex LC AMPTRAC Interface Modules sold separately (see below)
- AMPTRAC Duplex SC Adapter Plates and MPO Cassettes (Figures F and G) use standard AMP NETCONNECT Enclosures in Chapter 11

MT-RJ and Duplex LC

Description	I/O Interface	Type	Capacity	Fiber Type	Rack Units	Figure	Part Number
AMPTRAC MT-RJ and Duplex LC Patch Panels		Drawer	4 Interface Modules or MPO Cassettes 24-Port (48-Fiber) Modules and Cassettes sold separately	-	1U	A	1933443-1
		Enclosure	12 Interface Modules or MPO Cassettes 72-port (144-Fiber) Modules and Cassettes sold separately	-	4U	B	1435593-2
AMPTRAC MT-RJ Interface Module	IDC or 110 Plug & Play (1435844/1933152)	Interface Module with SL Insert	6-ports (12-Fiber) SL Insert included (MT-RJ Jacks sold separately)	62.5 μm (OM1) 50 μm XG (OM3) Singlemode (OS1)	-	C	1933421-1 1933421-2 1933421-3
AMPTRAC Duplex LC Interface Module	IDC or 110 Plug & Play (1435844/1933152)	Interface Module with LC Adapters	6-ports (12-Fiber) SL Insert and LC Adapters Included	62.5 μm (OM1) 50 μm XG (OM3) Singlemode (OS1)	-	D	1933420-1 1933420-2 1933420-3
AMPTRAC MT-RJ MPO Cassettes	6-Position Mod Plug (RJ-11) (1499684)	MPO Cassette	6-ports (12-Fiber)	62.5 μm (OM1) 50 μm XG (OM3) Singlemode (OS1)	-	-	1435594-2 1435672-2 1435673-2
AMPTRAC Duplex LC MPO Cassettes	6-Position Mod Plug (RJ-11) (1499684)	MPO Cassette	6-ports (12-Fiber)	62.5 μm (OM1) 50 μm XG (OM3) Singlemode (OS1)	-	E	1499647-2 1499648-2 1499649-2

Note: AMPTRAC MT-RJ and Duplex LC require use of above Drawer or Enclosure.
AMPTRAC MT-RJ Interface Module requires purchase of appropriate MT-RJ Jack or pigtail.

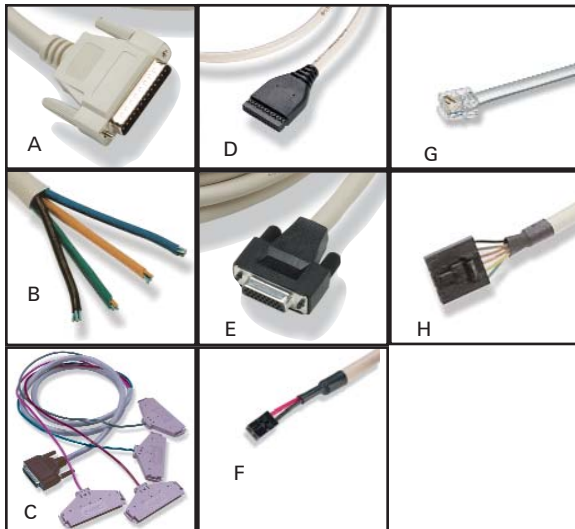
AMPTRAC Duplex SC

AMPTRAC Duplex SC Snap-in Adapter Plates	6-Position 2.54 MTE (1499685)	Snap-in Adapter Plate Retrofit Kit	6-ports (12-Fiber) includes adapter For Adapter Plate 559596	Multimode Singlemode (OS1)	-	F	1435657-1 1435657-2 1435685-1
AMPTRAC Duplex SC MPO Cassettes	6-Position 2.54 MTE (1499685)	MPO Cassette	6-ports (12-Fiber)	62.5 μm (OM1) 50 μm XG (OM3) Singlemode (OS1)	-	G	1435653-2 1435688-2 1435689-2

Note: AMPTRAC Duplex SC Snap-in Adapter Plate and MPO Cassettes use standard fiber enclosures on pages xxx and xxx.

Analyzer I/O Cable Assemblies

Analyzer I/O Cable Assemblies



Product Facts

- AMPTRAC Connectivity Management System I/O Cable Assemblies are available with the following connectors
 - DB25 connector (on Analyzer)
 - 110 Plug and Play connector (on AMPTRAC SL Series patch panels) and MT-RJ/Duplex LC Interface Modules
 - HD22 connector (on MRJ21 and shielded patch panels)
 - 2.0 mm AMPMODU connector (used with the Analyzer DB25 adapter 1499641-1)
 - 2.0 mm AMPMODU (on sensor strips)
 - 6-position modular plug (RJ11) (on MT-RJ and LC Duplex MPO Cassettes)
 - 6-position 2.54 MTE connector (on Duplex SC adapter plates and MPO cassettes)
- All I/O cables come with molded boots on the analyzer connector end
- I/O Cable Assemblies are Non-Plenum (CM rated) and Listed

Monitored Device	Application	Connector End 1	Connector End 2	Number of Conductors	Part Number
SL, MT-RJ, and LC Patch Panels	Cat 6A F/UTP, Cat 6 U/UTP MT-RJ, Duplex LC	DB25 - Analyzer (A)	None - used with IDC (B)	24	1435844-X
			110 Plug & Play (C)	24	1933152-Y
MRJ21	MRJ21	DB25 - Analyzer (A)	HD22 (E)	24	1499507-Y
			2.0 mm (D)	24	1435845-Y
PCB Sensor	LAN Switches	2.0 mm (D)*	2.0 mm (D)	16	1499686-Y
				12	1499687-Y
				8	1499688-Y
				6	1499689-Y
				2	1499690-Y
MT-RJ/LC MPO Cassettes	MT-RJ & Duplex LC	2.0 mm (D)*	6-Position, RJ11 (G)	6	1499684-Y
Duplex SC	Duplex SC Adapter Plates and MPO Cassettes	2.0 mm (D)*	6-Position 2.54 MTE (H)	6	1499685-Y

X denotes length in feet: -7 = 7, 1-4 = 14, 5-0 = 50, 9-9 = 100 (Note: Can be cut to length)

Y denotes length in feet: -4 = 4, -7 = 7, 1-0 = 10, 1-4 = 14, 2-5 = 25, 5-0 = 50, 7-5 = 75, 9-9 = 100

*NOTE: Use with DB25 Adapter P/N: 1499641-1 to connect monitored device to AMPTRAC Analyzer.

Adapter, DB25 to 2.0 mm AMPMODU

PART NUMBER 1499641-1



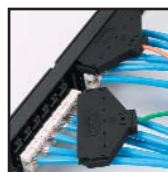
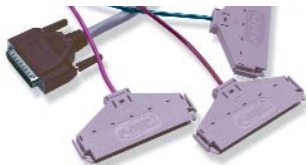
Back Detail - 24 Position
2.0 mm AMPMODU

Product Facts

- For use with 2.0 mm connectors less than 24 position
- Allows for side-by-side connections of multiple 2.0 mm AMPMODU connectors
- Allows for use of all analyzer ports
- Built-in strain relief and cable management

110 Plug and Play Kit

PART NUMBER 1933151-1



110 Plug and Play Kit
Assembled

Product Facts

- Used with I/O Cable Assembly part number 1435844 (use 4 per assembly)
- Easy to lace and field terminate (no special tools required)
- Built-in latches and orientation features