

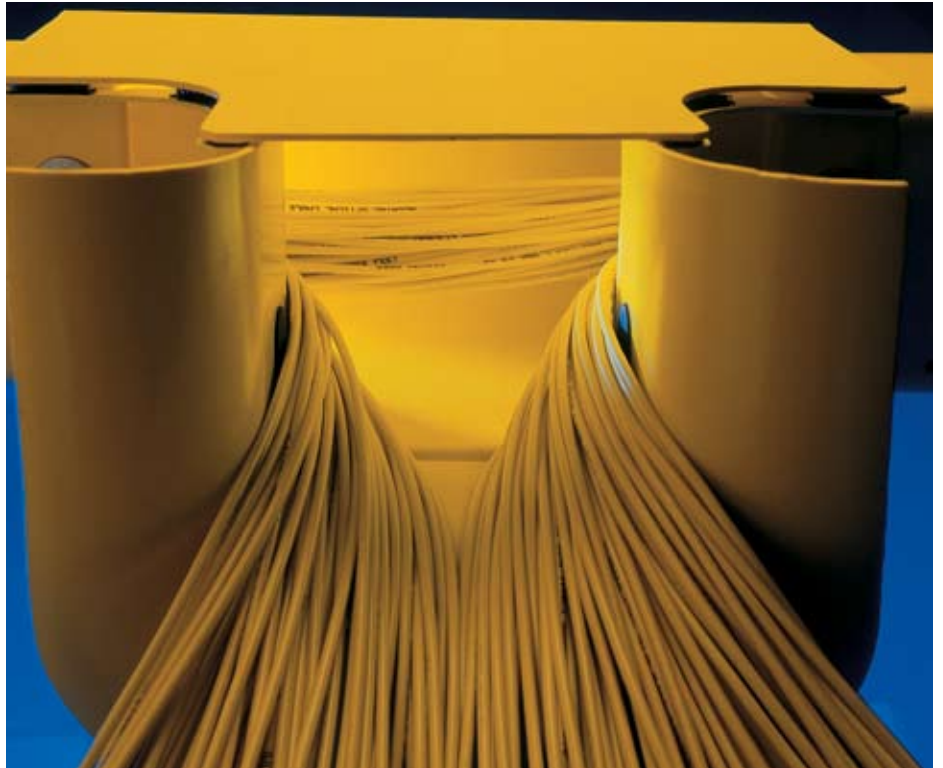
**Fiber Optic Raceway System**

- All exposed surfaces are textured
- High impact thermoplastic robust design
- Hardware-free covers on all components
- Versatile mounting kits
- Internal cable retainers
- Yellow color

The Lightrax fiber optic raceway system is a fully enclosed ducting system that segregates, routes, and protects fiber optic cables and jumpers from building entry point to fiber termination and distribution equipment. With the raceway system, fiber is easily traced and accessed through its convenient fully wrap-around, lay-in design. It also maintains complete separation from twisted pair and coax cable.

Straight channels and curved fittings are specifically designed to prevent fibers from violating a 2-inch minimum bend radius requirement and protects fibers from snagging, crimping, and stress.

The system's modular design and extensive mounting kit selection enable the project engineer to meet cable capacity requirements and future expansion needs using existing superstructure, cable racking and/or equipment racking. The flexibility and simplicity of the Lightrax fiber optic raceway system ensures cost-effective installations for new or existing cable routes in Central Offices, CEVs, Headends, Remote Offices, Data Centers, and Wiring Closets.



**Sizes and Specifications** (dimensions shown in inches)

		<b>FRX - XXXX - XX XX X</b>	
<b>Material Type</b>			<b>Pre-Drilling</b>
S- Standard PVC			P - Pre-drilled
H- Halogen Free Yellow only			-- Not Predrilled
<b>Description of Components</b>			<b>Color</b>
STWC 6 ft. solid channel with cover			YL - Yellow
STO8 8 ft. solid channel with cover			RG - Orange
SLWC 6 ft. slotted channel with cover			GR - Gray
SPLC Channel splice			
SPLF Fitting splice			
9HE 90 degree horizontal elbow			<b>Size</b>
4HE 45 degree horizontal elbow			22 - 2 x 2
9VOE 90 degree vertical outside (down) elbow			44 - 4 x 4
4VOE 45 degree vertical outside (down) elbow			48 - 4 x 8
9VIE 90 degree vertical inside (up) elbow			412 - 4 x 12
4VIE 45 degree vertical inside (up) elbow			
HTC Horizontal tee			
HT2 Horizontal tee reducer			
VTC Vertical tee			
VT2D Vertical tee reducer			
DVT Dual vertical tee reducer			
DHT Dual horizontal reducer			
TRMP Trumpet			
CRSS 4-way cross			
RD Reducer			
RD48 4x8 reducer			
EDCP Endcap			
FTK Square-to-round adapter kit			
FRO Non-Intrusive Vertical Drop			
CR Cable retainer			
SCTF Slotted channel trumpet			
LTFA Lightrax-to-fiber guide adapter			
FCL Fiber caution label			

*HFS, CBW, CBH, LTRV, TR, LSR, LSRJK, SS, SSJK, SSTJK, LMRK, FLRMK, EATRK, TRMK, PABK, PACK, UFRCK, ERHK, ERVK, SSBK, DCK, UMK, TRLRK, and DLRMK: Hardware and mounting bracket kits (see detailed description in full ordering guide.*



8000 Purfoy Road  
Fuquay Varina, NC 27526-9349  
Tel 919-557 8900  
Fax 919-557 8498  
www.tycoelectronics.com  
www.telecomosp.com

Lightrax is a trademark of Tyco Electronics Corporation.

The information given herein, including drawings, illustrations and schematics which are intended for illustration purposes only, is believed to be reliable. However, Tyco Electronics makes no warranties as to its accuracy or completeness and disclaims any liability in connection with its use. Tyco Electronics' obligations shall only be as set forth in Tyco Electronics' Standard Terms and Conditions of Sale for this product and in no case will Tyco Electronics be liable for any incidental, indirect or consequential damages arising out of the sale, resale, use or misuse of the product. Users of Tyco Electronics products should make their own evaluation to determine the suitability of each such product for the specific application.

*a vital part of your world*