

SL Series Modular Jack Termination Tool and Accessories



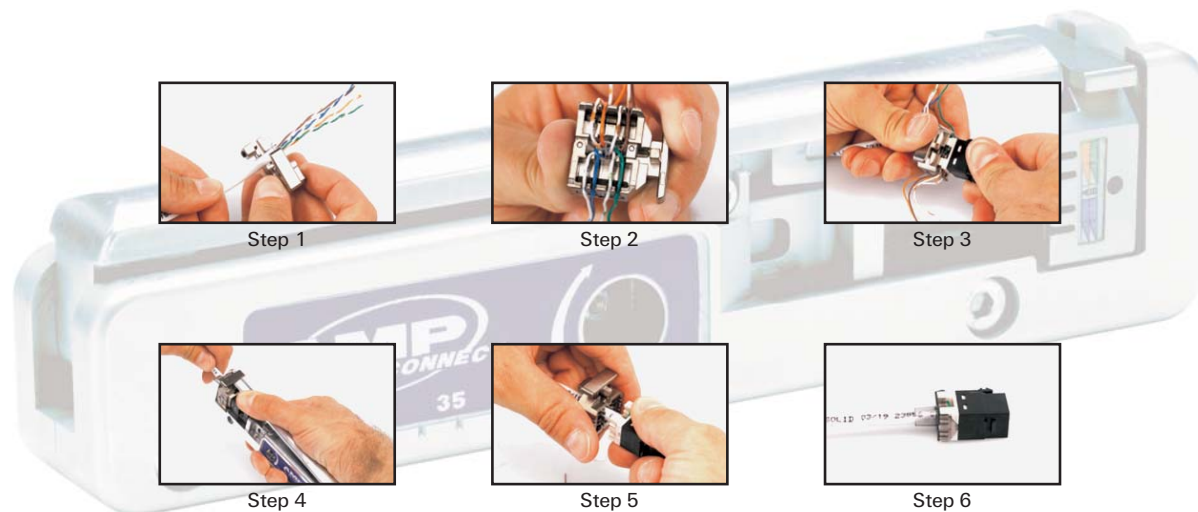
Product Facts

- Termination tool for SL Series Jacks
- Simplifies the termination process, especially for Category 6 Jacks
- Terminates and cuts all 8 conductors at once
- Simplifies lacing process and speeds up terminations
- Tool without Lacing Fixture is for use with SL Series AMP-TWIST 6A Modular Jacks

1.7

| Description | | Part Number |
|---|------------------------|-------------|
| SL Series Modular Jack Termination Tool | With Lacing Fixture | 1725150-1 |
| | Without Lacing Fixture | 1725150-3 |
| Replacement Lacing Fixture | | 1673956-1 |

SL Series Modular Jack Termination Tool UTP Termination Method



67