

**S**ignature Solutions ...

## Cable Management

Supports  
Cat 6a



CHATSWORTH  
PRODUCTS, INC.

Helping you

Organize. Store. Secure.<sup>SM</sup>

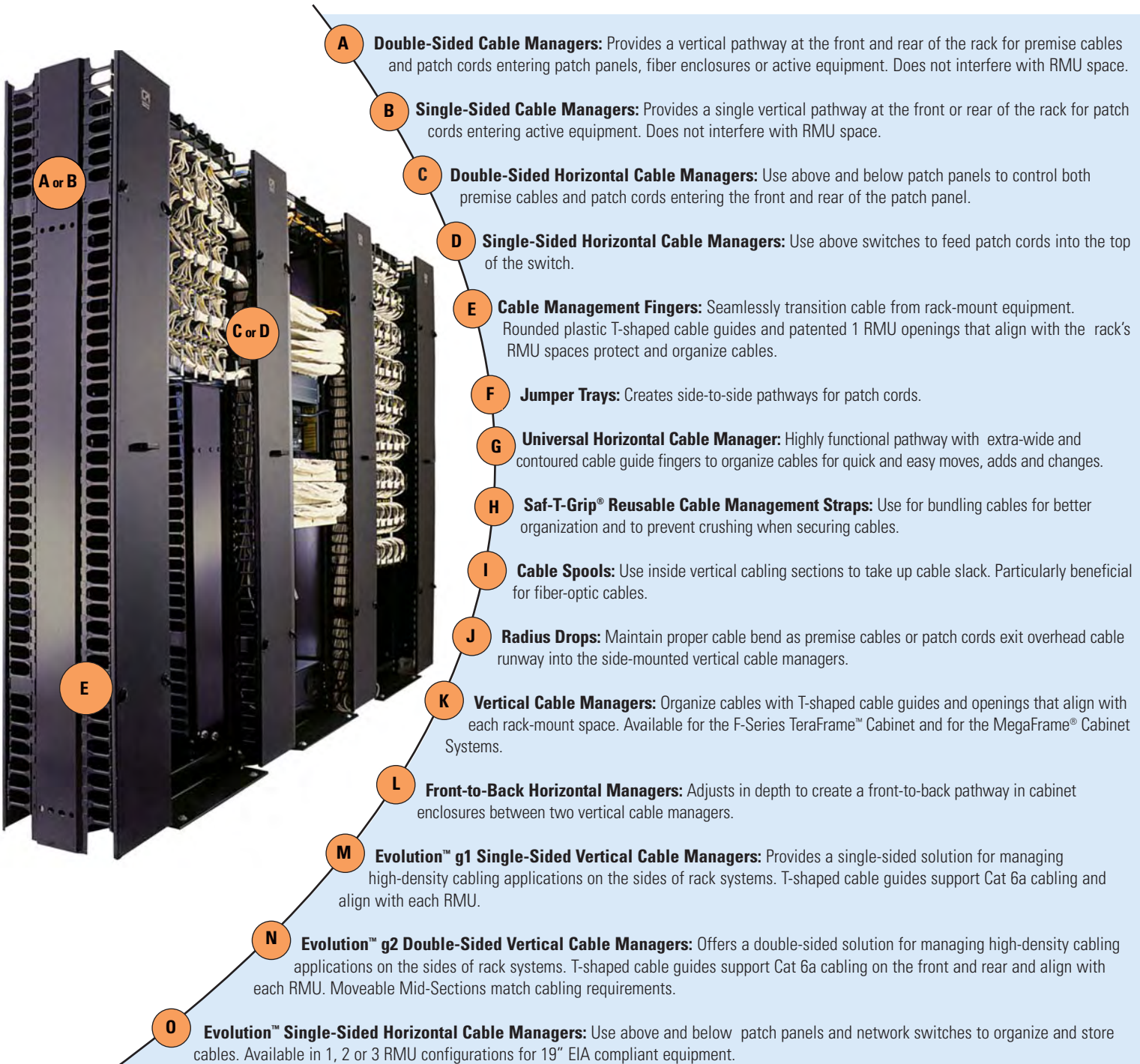
technology equipment ...

# Your Network keeps getting faster. Trust CPI to help you keep up.

Proper cable management is integral to the performance and effectiveness of your network. Managing and maintaining cables and cords provides the critical support, reliability and flexibility needed to sustain and grow your network capabilities.

## CPI Cable Management Solutions will help you...

- Streamline the management of your cables and cords to optimize the signal quality and network speed of your information exchange.
- Organize cables so that they can be easily traced from start to finish when performing moves, adds and changes, saving you valuable time and money.
- Fulfill high-density cabling requirements while maintaining proper bend radius and slack management for maximum network performance.



**A Double-Sided Cable Managers:** Provides a vertical pathway at the front and rear of the rack for premise cables and patch cords entering patch panels, fiber enclosures or active equipment. Does not interfere with RMU space.

**B Single-Sided Cable Managers:** Provides a single vertical pathway at the front or rear of the rack for patch cords entering active equipment. Does not interfere with RMU space.

**C Double-Sided Horizontal Cable Managers:** Use above and below patch panels to control both premise cables and patch cords entering the front and rear of the patch panel.

**D Single-Sided Horizontal Cable Managers:** Use above switches to feed patch cords into the top of the switch.

**E Cable Management Fingers:** Seamlessly transition cable from rack-mount equipment. Rounded plastic T-shaped cable guides and patented 1 RMU openings that align with the rack's RMU spaces protect and organize cables.

**F Jumper Trays:** Creates side-to-side pathways for patch cords.

**G Universal Horizontal Cable Manager:** Highly functional pathway with extra-wide and contoured cable guide fingers to organize cables for quick and easy moves, adds and changes.

**H Saf-T-Grip® Reusable Cable Management Straps:** Use for bundling cables for better organization and to prevent crushing when securing cables.

**I Cable Spools:** Use inside vertical cabling sections to take up cable slack. Particularly beneficial for fiber-optic cables.

**J Radius Drops:** Maintain proper cable bend as premise cables or patch cords exit overhead cable runway into the side-mounted vertical cable managers.

**K Vertical Cable Managers:** Organize cables with T-shaped cable guides and openings that align with each rack-mount space. Available for the F-Series TeraFrame™ Cabinet and for the MegaFrame® Cabinet Systems.

**L Front-to-Back Horizontal Managers:** Adjusts in depth to create a front-to-back pathway in cabinet enclosures between two vertical cable managers.

**M Evolution™ g1 Single-Sided Vertical Cable Managers:** Provides a single-sided solution for managing high-density cabling applications on the sides of rack systems. T-shaped cable guides support Cat 6a cabling and align with each RMU.

**N Evolution™ g2 Double-Sided Vertical Cable Managers:** Offers a double-sided solution for managing high-density cabling applications on the sides of rack systems. T-shaped cable guides support Cat 6a cabling on the front and rear and align with each RMU. Moveable Mid-Sections match cabling requirements.

**O Evolution™ Single-Sided Horizontal Cable Managers:** Use above and below patch panels and network switches to organize and store cables. Available in 1, 2 or 3 RMU configurations for 19" EIA compliant equipment.

## Delivering the industry's most comprehensive Cable Management Solutions:

Whether you are upgrading your current infrastructure or designing a new installation, trust the experts at Chatsworth Products, Inc. (CPI) to deliver the most comprehensive line of Cable Management Products in the industry. CPI Cable Management sets the benchmark by providing:

### Critical Cat 6a Support

- Designed to meet ANSI/TIA/EIA installation guidelines for Cat 6a cabling and fiber
- Proper bend radii ensures maximum quality of data transmission
- Meets high-density cabling requirements

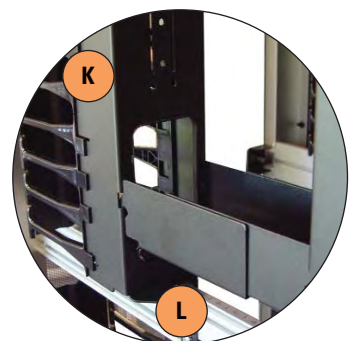
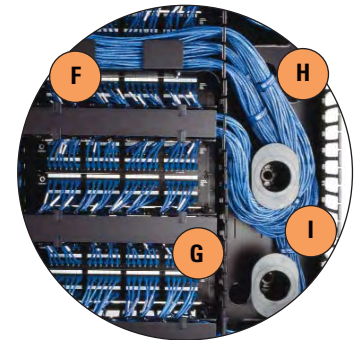
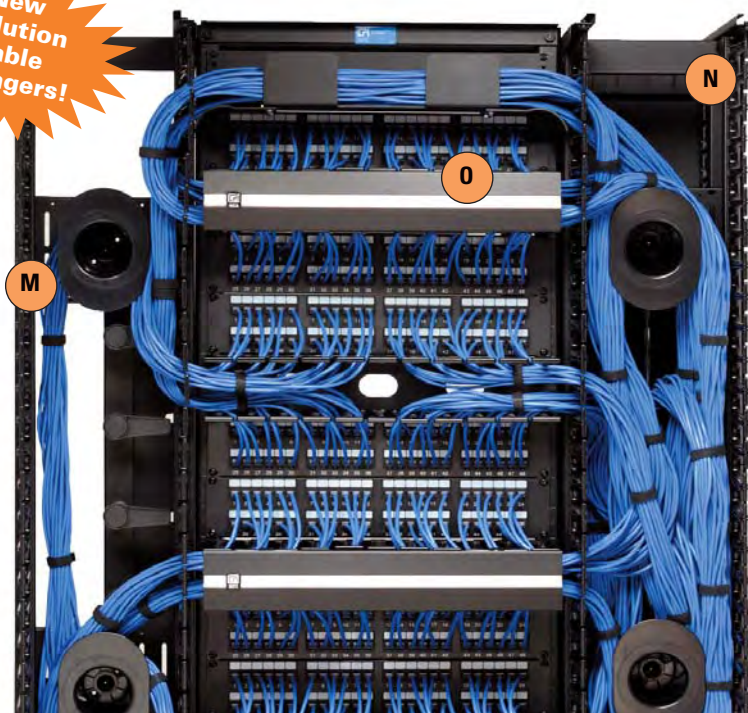
### Over 500 Standard Cable Management Products

- Extensive product selection to satisfy various applications
- Provides vertical and horizontal cable management options in a variety of styles, widths, heights and depths
- Available to meet project scheduling needs

### Cost Effective Solutions

- Quality products that simplify network maintenance and costs
- Perform easy moves, adds and changes to connections, saving time and money
- Supports future growth and cabling demands

**New  
Evolution  
Cable  
Managers!**



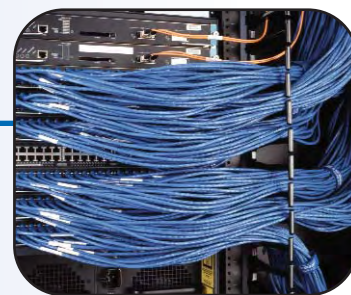
## New Evolution™ Cable Management – The Next Generation of Cable Management

To fulfill modern data center needs, CPI's new Evolution™ Cable Management provides state-of-the-art solutions for managing high-density and Cat 6a cabling applications on open two-post and four-post rack systems. With enhanced interior features that maximize cable capacity and function, Evolution makes managing your cabling infrastructure easier than ever.

- Designed for high-density and Cat 6a cabling
- Market-leading size and strength
- Available in single-sided, double-sided and horizontal models
- Patented Movable Mid-Sections maximize flexibility and function
- Provide innovative cable bundle management and fiber segregation capabilities
- Match appearance of popular TeraFrame™ Family of Cabinets

## Special Features and Accessories

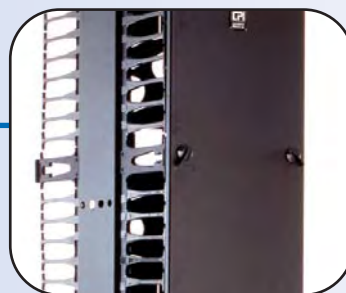
### Extended Fingers



#### Cable Capacity and Organization

CPI's patented cable management fingers, with 1 RMU spacing, align with the rack's RMU spaces for a seamless transition of patch cords or cables from your rack-mount equipment. CPI's large cable openings and extra finger depths allow large bundles of cables to be easily managed and can support up to 48 Cat 5e/6/6a cables. This solution is ideal for installations involving modular switches that must be cabled from one side or with angled patch panels. Evolution™ Vertical Cable Mangers, MCS Master Cabling Section, CCS Combination Cabling Section, Global Vertical Cabling Section and Enhanced Vertical Cable Managers for Cabinets are available with extended finger (-EFX) cable guides. CPI also offers the rack-mountable Extended Fingers Bracket to provide a retrofit solution for cable management in specific areas of the rack rather than along its entire height.

### Hinged Latching Doors



#### Professional Look & Functional Access

CPI's vertical and horizontal cable managers deliver a clean, professional look to your network installation. The hinged latching doors cover the patch cords and cabling inside the manager. CPI's Evolution, MCS and CCS Vertical Cable Managers have rotating latches that allow the door to be opened to the right or left, or easily removed for complete cable access. CPI's Evolution and Universal Horizontal Cable Managers have snap latches that allow the cover to be rotated up or down or taken off entirely.

### Cable Spools



#### Fast Fact

##### White Paper

For more information about cable management standards and applications, read CPI's White Paper at [www.chatsworth.com/cablemanagement](http://www.chatsworth.com/cablemanagement).

#### Slack Management & Bend Radii Control

Patch cords are made in certain standard lengths. The distance between your connection points will vary, resulting in different amounts of cable slack. Cable Spools, especially useful for fiber or Cat 5e/6/6a cables, reduce slack and prevent cables from becoming tangled — or even worse — twisted, crushed, crimped or bent sharply. In addition, Cable Spools create smooth bends around turns to help maintain cable performance. Cable Spools can be mounted inside any 8"W (200 mm), 10"W (250 mm), 12"W (300 mm) or 15"W (380 mm) CPI Evolution Vertical Cable Manager, Master or Combination Cabling Section and on the High Density Patching Frame (some models include spools).

# Configured Systems

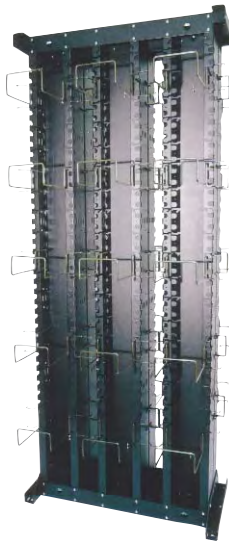
CPI offers configured systems that combine Racks, Cabinets and Enclosures with Cable Management Products to fit various types of applications.



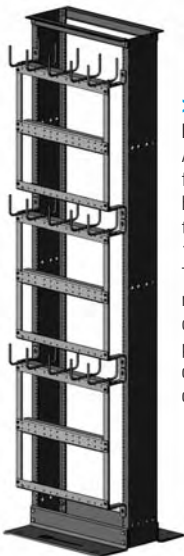
**>> Global Standard Pack**  
A versatile, low-cost cable management solution that will work for most applications in small networks. It includes a CPI Standard Rack plus one or two Global Vertical Cabling Sections in a single package — saving time and money. The cabling sections may be used on one or both sides of the rack and facing the front or the rear, allowing configurations that support patch panels, fiber enclosures, network switches, computers or a mix of equipment. Also includes a concrete floor installation kit.



**>> High Density Patching Frame**  
A rack with integrated cable management designed to support a high-density of patch panels. Each cable management fin supports up to five bundles of cables each. This product is an excellent alternative to deep-channel racks, providing better organization and access to cables.



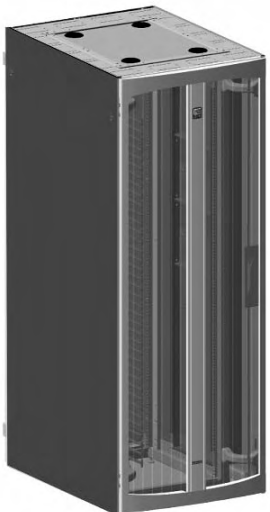
**>> 110 Customizable Frame**  
A main distribution frame that supports high-density 110D-style (without legs) terminating blocks from 4500 pair to 9000 pair. Moveable cable rings and brackets allow the user to create custom pathways for jumper cables. Available single- or double-sided.



**>> MDF 66 Block Mounting System**  
A main distribution frame that supports high-density 66-style terminating blocks from 1200 pair to 5400 pair. The horizontal wire management loops and deep rack channel provide efficient cross-connect and jumper cable management.



**>> XLBET 110A Block Mounting Systems**  
The XLBET (Extra Large Building Entrance Terminal) 110A Block Mounting System has been designed for high-density, space-saving 110A style block mounting from 3600 pair to 10,800 pair. The large wire managers provide distinct vertical and horizontal cable and jumper pathways for efficient space usage. Ships completely assembled for quick, easy installation.



**>> N-Series TeraFrame™ Network Cabinet (NF1K-113C-C42)**  
Used in data centers, computer rooms and network equipment rooms to store network switches and SAN directors and to organize, store and secure network connections. 31.5"W (800 mm) cabinet available in 10 heights and 11 depths and features offset doors and side panels that provide additional cable management space around equipment. T-shaped cable guides organize cables by RMU at the front of the cabinet. Vented doors provide front-to-rear airflow. An optional internal side-mounted Network Switch Exhaust Duct captures and removes hot exhaust air from side-airflow switches. Choose solid or vented side panels. Fiber management accessories are also available.



**>> F-230 F-Series TeraFrame™ Cabinet Solution Bundle**  
Used in data centers, computer rooms and network equipment rooms to store network and cable termination equipment to organize, store and secure network and cable connections. This bundle includes a 31.5" (800 mm) F-Series TeraFrame Cabinet (31.5"W x 39.4"D) with four (4.6"W x 12.6"D) Vertical Cable Managers and three Front-to-Back Cable Managers. This cabinet includes solid side panels, perforated doors and a solid top panel with four large brush-sealed cable access ports. Additional accessories are available for this cabinet.

# Create a Cable Management Solution with CPI Rack Systems

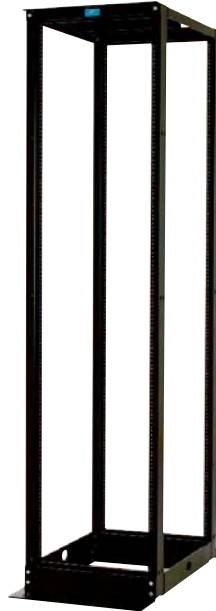
## Step One : Choose your two-post or four-post Rack System



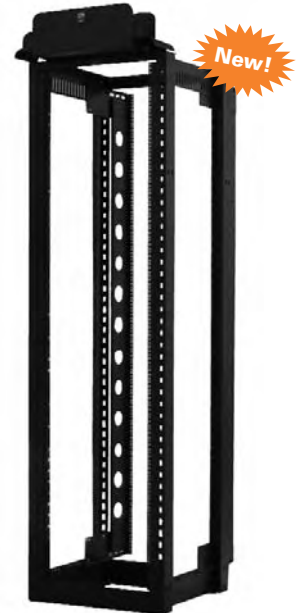
>> Standard Rack  
>> Universal Rack  
>> 6" Deep Rack



>> Seismic Frame® Two-Post Rack (for Evolution™ and MCS-EFX only)



>> QuadraRack™ 4-Post and Server Frame  
>> Adjustable Depth QuadraRack™/ServerRack



>> Adjustable Rail QuadraRack™/ServerRack

## Step Two : Choose your cabling section



### >> Evolution Vertical Cable Manager

CPI's largest, most feature rich vertical cable manager. The stylish front door has a curved design and aluminum center feature to match CPI's TeraFrame™ Family of Cabinets. The door features a two-point latch operated by a single knob, opens to the right or left and can be removed when cabling. The door attaches at the top and bottom of the cable manager and does not limit the amount of cable entering/exiting any RMU space. Large cable openings between cable management fingers align with each RMU space. Movable Mid-Sections on double-sided versions allow a 50/50, 60/40 or 40/60 split of interior space. Available in single- and double-sided versions in several sizes.



### >> VCS Vertical Cabling Section

An open cable trough with easy-to-use, flip-open latches for organization of large cable bundles. Available in single- and double-sided versions in several sizes. Cover and snap-on Finger Snaps Cable Guides are available as accessories.

### >> MCS Master Cabling Section

Provides patented cable management fingers aligned with each RMU space. The sturdy door/cover has a handle and mechanical latch that keeps the door in a closed position. Available in single- and double-sided versions in several sizes including extended finger versions for high cable capacity.

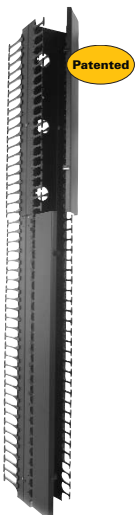


### >> CCS Combination Cabling Section

A double-sided alternative that combines an MCS front with a VCS rear. Allows cables to exit into each RMU space on the front side of the rack but is mostly open on the reverse side for larger cable bundles. Available in several sizes. VCS accessories may be used with CCS.

### >> Global Vertical Cabling Section

CPI's most cost-effective vertical manager. Provides patented cable management fingers aligned with each RMU space. Includes a snap-on, hinged cover. Available in single- and double-sided versions in several sizes. Alternately, a low-cost cable ring accessory similar to VCS can be added to the rear of single-sided versions.



### Step Three : Add horizontal cable managers



**New!**

**>> Single-Sided Evolution Horizontal Cable Manager**

Styled to match Evolution Vertical Cable Managers and the TeraFrame Family of Cabinets. Use above and below patch panels and network switches to guide cables directly to each connection. Available 8.2"D (208 mm) in 1, 2 and 3 RMU.



**>> Double-Sided Universal Horizontal Cable Manager**

Styled to match MCS, CCS and GVCS. Use above and below patch panels to guide cables directly to the connection. Available 12"D (300 mm) in 1, 2 and 3 RMU.



**>> Single-Sided Universal Horizontal Cable Manager**

Styled to match MCS, CCS and GVCS. Use above network switches to guide cables directly to the connection. Available 5"D (130 mm) or 6"D (150 mm) in 1, 2 or 3 RMU.



**>> Jumper Trays**

Creates side-to-side pathways for patch cords. Available 3.5"D (89 mm) or 6"D (150 mm), 2 RMU only.



**>> 19" Horizontal Wire Management Panel**

An open alternative to the Universal Horizontal Cable Manager. Use above and below patch panels and switches. Available 4"D (100 mm) in 1 or 2 RMU.

### Step Four : Choose your accessories



**>> Cable Spools**

Use inside vertical cabling sections to take up patch cord slack. Required when managing fiber.



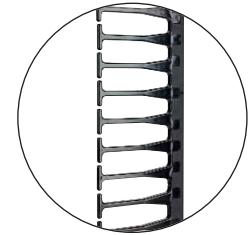
**>> Cable Lashing Bar Kit**

Use in Evolution vertical managers to easily anchor cable bundles and maximize cable fill capacity.



**>> Saf-T-Grip Reusable Cable Management Strap**

Loosely bundle and secure cables to prevent cable damage.



**>> Extended Fingers Bracket**

Use alongside network switches to guide cables into each RMU space.

### Special Features : Consider these features when selecting cable managers



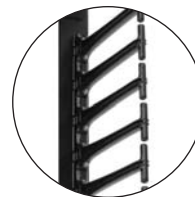
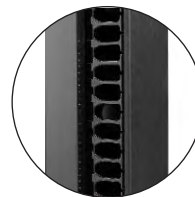
**>> Single- or Double-Sided Cabling Section/Manager**

Cabling sections/managers are available single- or double-sided depending on the application. Single-Sided Cabling Sections/Managers provide a convenient cable run between equipment and racks. Double-Sided Cabling Sections keep premise cables and patch cords separate and have pass-through ports for cables and tie slots for Saf-T-Grip® Straps.



**>> Hinged Latching Door**

The Evolution, MCS and CCS doors hinge open to the right or left for easy access to cables and latch in the closed position to protect cables from damage.



**>> Cable Fingers**

Cable management T-shaped fingers are available in standard and Extended Fingers -EFX capacity. The EFX versions extend 2-1/2" (64 mm) farther than standard fingers creating additional depth and a larger cable fill area. Evolution Cable Managers use a high-capacity finger similar to the EFX but with improved strength and rigidity.

**Fast Fact**

**Cable Fill Information**

Use the CPI Cable Fill Table to quickly estimate capacity for CPI Cable Management Products.

<http://www.chatsworth.com/cablefill>

# Create a Cable Management Solution with CPI Cabinet & Enclosure Systems

## 1 Step One : Choose your Cabinet & Enclosure System



### >> CPI Cabinet Systems

- F-Series TeraFrame™ Cabinet
- N-Series TeraFrame™ Network Cabinet
- M-Series MegaFrame® Cabinet
- C-Series SlimFrame® Cabinet
- T-Series SteelFrame Cabinet
- Enhanced SteelFrame Cabinet
- E-Series ISP Co-Location Cabinet
- Seismic Frame® Cabinet

## 2 Step Two : Choose your vertical cabling section by cabinet style

### MegaFrame®, SlimFrame® & SteelFrame



#### >> Vertical Cable Manager

All CPI MegaFrame®, SlimFrame® and SteelFrame Cabinet Systems have integrated cable management space and include one pair of vertical cable managers with rings. Cable managers can be adjusted front-to-rear to align with equipment. Add more cable managers to create multiple cable pathways.



#### >> Enhanced Vertical Cable Manager for MegaFrame

Allows cables to be organized by RMU making it easier to trace during moves, adds and changes. Available in two sizes for large and extra-large cable capacities. The narrow version can be added to any MegaFrame and the wide version is used in any 23" wide MegaFrame that has been converted to 19" width using the 23"-19" Rail Adapter Kit.



#### >> Vertical Cabling Ring Accessory Kit

Use the ring kit to double the capacity of an existing cable manager. Every CPI Vertical Cable Manager can provide multiple cable pathways.

Rings shown on Vertical Cable Manager.



#### >> Front-to-Back Horizontal Manager for MegaFrame

Adjustable trays connect a front-facing and a rear-facing Enhanced Vertical Cable Manager to create a front-to-back cable pathway along the side of the cabinet. Sold in pairs.

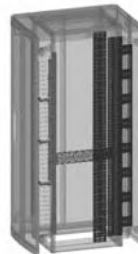
### F-Series TeraFrame™ Cabinet System



#### >> Vertical Cable Manager for F-Series TeraFrame

Attaches to the equipment mounting rails and adjusts with equipment along the side of the cabinet. Both long and short T-shaped fingers are available.

### N-Series TeraFrame™ Cabinet System



#### >> CPI Fiber Management for the TeraFrame™ Family of Cabinets



Several cable managers that support Corning Cable Systems LANscape® Pretium™ Zero-U System and Plug & Play™ Universal Systems products in N-Series and F-Series TeraFrame Cabinets. CPI Fiber Management components are located along the right and left side of the cabinets; effectively manage trunk, jumper and harnesses cables; and do not block airflow to side-airflow SAN directors. Use a Fiber Trunk Cable Manager, Vertical Furcation Bracket, Universal Accessory Rail and several Swivel Cable Spools on each side of the cabinet that supports fiber trunk cables.

### Enhanced SteelFrame



#### >> External Cable Manager

Add to the side of an Enhanced SteelFrame Cabinet to create vertical and front-to-rear cable pathways. Vertical cable openings align with RMU spaces in the cabinet. The External Cable Manager includes solid locking front and rear doors and has a solid bottom with brush-sealed cable access holes. Available 6"W (150 mm) or 12"W (300 mm).

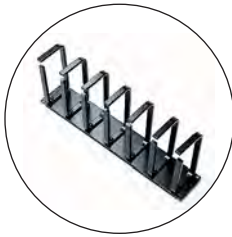
## 3 Step Three : Add horizontal cable managers



New!

### >> Single-Sided Evolution Horizontal Cable Manager

Styled to match Evolution Vertical Cable Managers and the TeraFrame Family of Cabinets. Use above and below patch panels and network switches to guide cables directly to each connection. Available 8.2" (208 mm) deep in 1, 2 and 3 RMU.



### >> Large Horizontal Ring Panel

Use above modular network switches to guide cables into vertical module cards. Available 6"D (150 mm), 2 RMU only.



### >> Single-Sided Universal Horizontal Cable Manager

Use above network switches to guide cables directly to the connection. Available 5"D (130 mm) or 6"D (150 mm), 1, 2 or 3 RMU.



### >> Jumper Trays

Creates side-to-side pathways for patch cords. Available 3.5"D (89 mm) or 6"D (150 mm) 2 RMU only.



### >> Rack Cabling Manager

Small horizontal manager, ideal for supporting one or two patch panels. Available 2"D (50 mm) only, 1 or 2 RMU.



### >> 19" Horizontal Wire Management Panel

An open alternative to the Universal Horizontal Cable Manager. Use above and below patch panels and switches. Available 4"D (100 mm), 1 or 2 RMU.

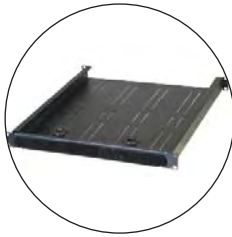
## 4 Step Four : Choose your accessories



New!

### >> Swivel Cable Spool

Manages optical fiber cable slack at the front of the N-Series TeraFrame Network Cabinet. Part of the CPI Fiber Management solution for Corning Cable Systems LANscape® Pretium™ Zero-U System. Used with the Universal Accessory Rail to organize high-density MTP-to-LC duplex harness cables.



### >> Rack-Mount Cable Shelf

Use inside 19" cabinets to provide front-to-rear pass-through and slack management for fiber patch cords. The shelf has brushed openings for cables along the front panel. Uses only 1 RMU. Attaches to rails set 20-44"D (560 mm to 1020 mm).



### >> 23"-19" Rail Adapter Kit

Allows 19" wide equipment to be placed within a 23" wide MegaFrame Cabinet. Use with Wide Enhanced Vertical Cable Manager to create a 19" wide high-density cable solution in the MegaFrame Cabinet System.



### >> Saf-T-Grip Reusable Cable Management Strap

Bundle and secure cables to prevent cable damage.



### >> Front-to-Back Cable Manager

Provide a front-to-back pathway for cables transitioning between switches and computers. Use between two Enhanced Vertical Cable Managers in MegaFrame Cabinets. Telescopes to match the distance between front and rear Enhanced Vertical Cable Managers.



Patented

### >> Horizontal Cable Tray

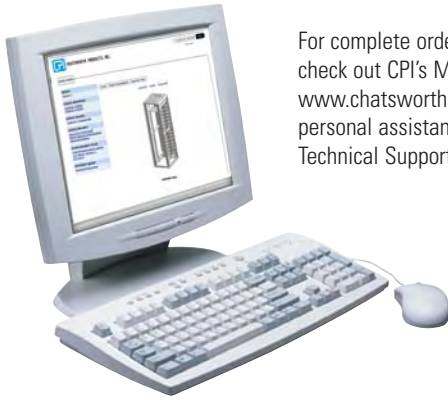
Use inside MegaFrame to provide a side-to-side pathway for cables. Attaches to the cabinet frame and does not use RMU space. Sold as a kit, two each included.

### Fast Fact

CPI's cable management accessories are available for all cabinet sizes and can be combined with the base cabinet into a custom-configured, factory assembled solution that fits your exact needs.

## Ordering Information

The following charts provide part numbers for all of the configured systems you've seen presented in this brochure; however, additional part numbers and configured systems may be available.



For complete ordering information, check out CPI's Mini-Catalog at [www.chatsworth.com](http://www.chatsworth.com). If you require personal assistance, contact Technical Support at 800-834-4969.




### Configured Systems (as shown on page 5)

Global Standard Pack	
57001-703	Global Standard Pack, 19"W x 7"H Standard Rack + One 3.65"W x 6.76"D x 7"H GVCS
57002-703	Global Standard Pack, 19"W x 7"H Standard Rack + Two 3.65"W x 6.76"D x 7"H GVCS
57003-703	Global Standard Pack, 19"W x 7"H Standard Rack + One 6"W x 6.76"D x 7"H GVCS
57004-703	Global Standard Pack, 19"W x 7"H Standard Rack + Two 6"W x 6.76"D x 7"H GVCS
High Density Patching Frame	
55100-703	19"W x 7"H, 45 RMU, 750 lb Static Load Rating
110 Customizable Frame (110D Blocks)	
12922-701	36.32"W x 7"H x 20.3"D, Single-Sided, 4500 pair
12923-701	36.32"W x 7"H x 29.6"D, Double-Sided, 9000 pair
XLBET 110A Block Mounting System (110A Blocks, 300 pair)	
11810-736	23"W x 7"H, Single-Sided, 12 Blocks, 3600 pair
11810-772	23"W x 7"H, Double-Sided, 24 Blocks, 7200 pair
11910-754	35"W x 7"H, Single-Sided, 18 Blocks, 5400 pair
11910-780	35"W x 7"H, Double-Sided, 36 Blocks, 10800 pair
MDF 66 Block Mounting System	
12577-712	19"W x 7"H, Single-Sided, 24 blocks, 1200 pair
12577-724	19"W x 7"H, Double-Sided, 48 blocks, 2400 pair
12578-727	35"W x 7"H, Single-Sided, 54 blocks, 2700 pair
12578-754	35"W x 7"H, Double-Sided, 108 blocks, 5400 pair
TeraFrame™ Solution Bundles	
NF1K-113C-C42	N-Series TeraFrame Network Cabinet, 31.5"W x 83.5"H x 44.2"D (800 mm x 2.1 m x 1122 mm) 19"W x 45 RMU. Square-Punched Rails, no Network Switch Exhaust Duct. includes top panel solid side panels, perforated metal front & rear doors with cam latches and keyed locks
F230-C	F-Series TeraFrame Cabinet, 31.5"W x 83.4"H x 39.4"D (800 mm x 2.1 m x 1001 mm) 19"W x 45 RMU, #12-24 Threaded Rails, includes top panel, solid side panels, perforated metal front and rear doors, slam latches, keyed locks with four vertical cable managers and three front-to-back managers



Cat 6a

### Build Your Own: Rack Systems (as shown on Pages 6 & 7)

Rack Systems	
55053-703	Standard Rack, 19"W x 7"H (2.1 m) x 3"D (80 mm), 45 RMU, 1000 lb load
66353-703	6" Deep Standard Rack, 19"W x 7"H (2.1 m) x 6"D (150 mm), 45 RMU, 1000 lb load
66383-703	6" Deep Standard Rack, 23"W x 7"H (2.1 m) x 6"D (150 mm), 45 RMU, 1000 lb load
46353-703	Universal Rack, 19"W x 7"H (2.1 m) x 3"D (80 mm), 15"D base, 45 RMU, 1500 lb load
46383-703	Universal Rack, 23"W x 7"H (2.1 m) x 3"D (80 mm), 15"D base, 45 RMU, 1500 lb load
13854-703	Seismic Frame Two-Post Rack, 19"W x 7"H (2.1 m) x 15"D (380 mm), 1000 lb load 
QuadraRack™	
50120-703	QuadraRack 4-Post Frame, 19"W x 7"H (2.1 m) x 29"D (740 mm), 45 RMU, 2000 lb load
15217-703	Adjustable QuadraRack 19"W x 7"H (2.1 m) x 29.5"D to 35.4"D (750-900 mm), 2000 lb load
15254-703	Adjustable Rail QuadraRack 19"W x 7"H (2.1 m) x 35.4"D (900 mm), 2200 lb load 
Evolution™ Vertical Cable Management	
35511-703	Evolution g1 Single-Sided, 6"W x 7"H x 13.2"D (150 mm x 2.1 m x 335 mm)
35512-703	Evolution g1 Single-Sided, 8"W x 7"H x 13.2"D (200 mm x 2.1 m x 335 mm)
35513-703	Evolution g1 Single-Sided, 10"W x 7"H x 13.2"D (250 mm x 2.1 m x 335 mm)
35514-703	Evolution g1 Single-Sided, 12"W x 7"H x 13.2"D (300 mm x 2.1 m x 335 mm)
35515-703	Evolution g1 Single-Sided, 15"W x 7"H x 13.2"D (380 mm x 2.1 m x 335 mm)
35521-703	Evolution g2 Double-Sided, 6"W x 7"H x 24.5"D (150 mm x 2.1 m x 622 mm)
35522-703	Evolution g2 Double-Sided, 8"W x 7"H x 24.5"D (200 mm x 2.1 m x 622 mm)
35523-703	Evolution g2 Double-Sided, 10"W x 7"H x 24.5"D (250 mm x 2.1 m x 622 mm)
35524-703	Evolution g2 Double-Sided, 12"W x 7"H x 24.5"D (300 mm x 2.1 m x 622 mm)
35525-703	Evolution g2 Double-Sided, 15"W x 7"H x 24.5"D (380 mm x 2.1 m x 622 mm) 
Evolution™ Single-Sided Horizontal Cable Manager	
35441-701	Evolution, Single-Sided, 19"W x 1 RMU x 8.2"D (208 mm)
35441-702	Evolution, Single-Sided, 19"W x 2 RMU x 8.2"D (208 mm)
35441-703	Evolution, Single-Sided, 19"W x 3 RMU x 8.2"D (208 mm)

Cat 6a

Cat 6a

### Fast Fact

**Technical Support and Product Customization**  
New products often begin as customer requests. CPI can customize a solution based on your needs and requirements. Simply call CPI Technical Support at 800-834-4969 or use our online Product Configurator tool at [www.chatsworth.com/configurator](http://www.chatsworth.com/configurator).

## Ordering Information

### Build Your Own: Rack Systems (as shown on Pages 6 & 7)

MCS Master Cabling Section	
30091-703	MCS, Single-Sided, 4.4"W x 7"H x 8.08"D (112 mm x 2.1 m x 205 mm)
30092-703	MCS, Single-Sided, 6"W x 7"H x 8.08"D (150 mm x 2.1 m x 205 mm)
30093-703	MCS, Single-Sided, 10"W x 7"H x 8.08"D (250 mm x 2.1 m x 205 mm)
30094-703	MCS, Double-Sided, 4.4"W x 7"H x 16.15"D (112 mm x 2.1 m x 410 mm)
30095-703	MCS, Double-Sided, 6"W x 7"H x 16.15"D (150 mm x 2.1 m x 410 mm)
30096-703	MCS, Double-Sided, 10"W x 7"H x 16.15"D (250 mm x 2.1 m x 410 mm)
MCS-EFX Master Cabling Section with Extended Fingers <span style="float: right;">Cat 6a</span>	
40092-703	MCS-EFX, Single-Sided, 6"W x 7"H x 10.62"D (150 mm x 2.1 m x 269 mm)
40093-703	MCS-EFX, Single-Sided, 10"W x 7"H x 10.62"D (250 mm x 2.1 m x 269 mm)
40094-703	MCS-EFX, Single-Sided, 12"W x 7"H x 10.62"D (300 mm x 2.1 m x 269 mm)
40095-703	MCS-EFX, Double-Sided, 6"W x 7"H x 21.23"D (150 mm x 2.1 m x 539 mm)
40096-703	MCS-EFX, Double-Sided, 10"W x 7"H x 21.23"D (250 mm x 2.1 m x 539 mm)
40097-703	MCS-EFX, Double-Sided, 12"W x 7"H x 21.23"D (300 mm x 2.1 m x 539 mm)
VCS Vertical Cabling Section	
11730-703	VCS, Single-Sided, 3.65"W x 7"H x 6.38"D (92 mm x 2.1 m x 162 mm)
11374-703	VCS, Single-Sided, 6"W x 7"H x 6.38"D (150 mm x 2.1 m x 162 mm)
12096-703	VCS, Double-Sided, 3.65"W x 7"H x 12.75"D (92 mm x 2.1 m x 323 mm)
11729-703	VCS, Double-Sided, 6"W x 7"H x 12.75"D (150 mm x 2.1 m x 323 mm)
CCS Combination Cabling Section	
30161-703	CCS, Double-Sided for 3"D Racks, 3.65"W x 7"H x 12.24"D (92 mm x 2.1 m x 310 mm)
30162-703	CCS, Double-Sided for 3"D Racks, 6"W x 7"H x 12.24"D (150 mm x 2.1 m x 310 mm)
30163-703	CCS, Double-Sided for 3"D Racks, 10"W x 7"H x 12.24"D (250 mm x 2.1 m x 310 mm)
30164-703	CCS, Double-Sided for 6"D Racks, 3.65"W x 7"H x 14.61"D (92 mm x 2.1 m x 371 mm)
30165-703	CCS, Double-Sided for 6"D Racks, 6"W x 7"H x 14.61"D (150 mm x 2.1 m x 371 mm)
30166-703	CCS, Double-Sided for 6"D Racks, 10"W x 7"H x 14.61"D (250 mm x 2.1 m x 371 mm)
CCS-EFX Combination Cabling Section with Extended Fingers <span style="float: right;">Cat 6a</span>	
40098-703	CCS-EFX, Double-Sided for 3"D Racks, 6"W x 7"H x 14.94"D (150 mm x 2.1 m x 379 mm)
40099-703	CCS-EFX, Double-Sided for 3"D Racks, 10"W x 7"H x 14.94"D (250 mm x 2.1 m x 379 mm)
40100-703	CCS-EFX, Double-Sided for 3"D Racks, 12"W x 7"H x 14.94"D (300 mm x 2.1 m x 379 mm)
GVCS Global Vertical Cabling Section	
12831-703	GVCS, Single-Sided, 6"W x 7"H x 6.76"D (150 mm x 2.1 m x 171 mm)
12833-703	GVCS, Single-Sided, 6"W x 7"H x 9.30"D (150 mm x 2.1 m x 236 mm)
12830-703	GVCS, Single-Sided, 3.65"W x 7"H x 6.76"D (92 mm x 2.1 m x 171 mm)
12832-703	GVCS, Single-Sided, 3.65"W x 7"H x 9.30"D (92 mm x 2.1 m x 236 mm)
14831-703	GVCS, Double-Sided, 6"W x 7"H x 13.52"D (150 mm x 2.1 m x 343 mm)
14830-703	GVCS, Double-Sided, 3.65"W x 7"H x 13.52"D (150 mm x 2.1 m x 343 mm)
Universal Horizontal Cable Manager, Double-Sided	
30529-719	UHCM, Double-Sided, 19"W x 1 RMU x 11.73"D (297 mm)
30530-719	UHCM, Double-Sided, 19"W x 2 RMU x 11.73"D (297 mm)
30531-719	UHCM, Double-Sided, 19"W x 3 RMU x 11.73"D (297 mm)
Universal Horizontal Cable Manager, Single-Sided	
30139-719	UHCM, Single-Sided, 19"W x 1 RMU x 4.96"D (126 mm)
30130-719	UHCM, Single-Sided, 19"W x 2 RMU x 5.14"D (130 mm)
30131-719	UHCM, Single-Sided, 19"W x 3 RMU x 5.14"D (130 mm)
30339-719	UHCM, Single-Sided, Deep, 19"W x 1 RMU x 6.26"D (159 mm)
30330-719	UHCM, Single-Sided, Deep, 19"W x 2 RMU x 6.44"D (163 mm)
30331-719	UHCM, Single-Sided, Deep, 19"W x 3 RMU x 6.44"D (163 mm)
Jumper Trays	
12183-719	Upper Jumper Tray, 19"W x 2 RMU x 3.5"D, Telescopes to adjust cable entry/exit (89 mm)
13183-719	Upper Jumper Tray, 19"W x 2 RMU x 6"D, Telescopes to adjust cable entry/exit (150 mm)
12185-719	Lower Tray, 19"W x 2 RMU x 3.5"D, Telescopes to adjust cable entry/exit (89 mm)
12187-719	Lower Tray, 19"W x 3 RMU x 3.5"D, Telescopes to adjust cable entry/exit (150 mm)
Extended Fingers Bracket	
12891-703	Bracket, 7 RMU
Cable Spools	
12765-706	Spools for GVCS, Pack of 6
12766-707	Spools 6"W, 10"W and 12"W Double-Sided, for VCS, CCS & MCS, Pack of 7
Saf-T-Grip®	
02006-201	Saf-T-Grip Strap, Open Loop Series, Pack of 25, 6"L, 2" diameter cable bundle
02009-201	Saf-T-Grip Strap, Open Loop Series, Pack of 25, 9"L, 3" diameter cable bundle
02012-201	Saf-T-Grip Strap, Open Loop Series, Pack of 25, 12"L, 4" diameter cable bundle

### Build Your Own: Cabinet & Enclosure Systems (as shown on Pages 8 & 9)

F-Series TeraFrame™ Cabinet System (2500 — 2000 lb Load Rating)	
FF1J-212A-C12	600 mm, 19"W x 36"D (910 mm), 45 RMU, 2500 lb, Solid Top, Side Panels, Perforated Doors
FF2J-212A-C22	700 mm, 19"W x 36"D (910 mm), 45 RMU, 2000 lb, Solid Top, Side Panels, Perforated Doors
FF3J-212A-C22	800 mm, 19"W x 36"D (910 mm), 45 RMU, 2000 lb, Solid Top, Side Panels, Perforated Doors
N-Series TeraFrame™ Cabinet System (2000 lb Load Rating) <span style="float: right;">New!</span>	
NF1K-113C-C42	800 mm, 19"W x 44.2"D, 45 RMU, Solid Top, Side Panels, Perforated Doors
NF2K-113C-C42	800 mm, 19"W x 44.2"D, 45 RMU, Exhaust Duct, Solid Top, Side Panels, Perforated Doors
M-Series MegaFrame® Cabinet System (2000 lb Load Rating)	
M1030-742	19"W x 7"H x 30"D (760 mm), 45 RMU, Solid Top and Sides, Perforated Doors
M1032-702	19"W x 7"H x 30"D (760 mm), 45 RMU, No Top, Sides or Doors
M2030-742	23"W x 7"H x 30"D (760 mm), 45 RMU, Solid Top and Sides, Perforated Doors
M1050-742	19"W x 7"H x 36"D (760 mm), 45 RMU, Solid Top and Sides, Perforated Doors
M2050-742	23"W x 7"H x 36"D (760 mm), 45 RMU, Solid Top and Sides, Perforated Doors
M1040-742	19"W x 7"H x 39"D (760 mm), 45 RMU, Solid Top and Sides, Perforated Doors
M2040-742	23"W x 7"H x 39"D (760 mm), 45 RMU, Solid Top and Sides, Perforated Doors
C-Series Slim Frame® Cabinet System (2000 lb Load Rating)	
C1030-742	19"W x 7"H x 30"D (760 mm), 43 RMU, Solid Top and Sides, Perforated Doors
C1050-742	19"W x 7"H x 36"D (910 mm), 43 RMU, Solid Top and Sides, Perforated Doors
C1052-742	19"W x 7"H x 36"D (910 mm), 43 RMU, No Top, Sides or Doors
T-Series SteelFrame Cabinet System (2000 lb Load Rating)	
T1030-742	19"W x 7"H x 30"D (760 mm), 45 RMU, Solid Top and Sides, Perforated Doors
T2030-742	19"W x 7"H x 30"D (760 mm), 45 RMU, Solid Top and Sides, Perforated Doors
T2032-702	19"W x 7"H x 30"D (760 mm), 45 RMU, No Top, Sides or Doors
T1050-742	19"W x 7"H x 36"D (910 mm), 45 RMU, Solid Top and Sides, Perforated Doors
T2050-742	19"W x 7"H x 36"D (910 mm), 45 RMU, Solid Top and Sides, Perforated Doors
Enhanced SteelFrame Cabinet System (2000 lb Load Rating)	
16141-701	19"W x 7"H x 36"D (910 mm), 45 RMU, Vented Top, Solid Side Panels, Perforated Doors
16142-701	19"W x 7"H x 39"D (990 mm), 45 RMU, Vented Top, Solid Side Panels, Perforated Doors
Vertical Cable Manager	
34421-C01	Vertical Cable Manager, .76"W x 9.3"D, 45 RMU, Short Finger for 600 mm F-Series
34441-C51	Vertical Cable Manager, 2.7"W x 10.1"D, 45 RMU, Short Finger, for 700 mm F-Series
34441-C01	Vertical Cable Manager, 2.7"W x 12.6"D, 45 RMU, Long Finger, for 700 mm F-Series
34441-C52	Vertical Cable Manager, 2.7"W x 10.1"D, 45 RMU, Short Finger, for 800 mm F-Series
34441-C02	Vertical Cable Manager, 2.7"W x 12.6"D, 45 RMU, Long Finger, for 800 mm F-Series
12465-707	Wide Vertical Cabling Ring Section, 7"H, for MegaFrame M-Series or SteelFrame T2 Series
11809-700	Narrow Vertical Cabling Ring Section, 7"H, for SlimFrame or SteelFrame T1 Series
16144-750	External Cable Managers, 6"W x 7"H x 36"D, for Enhanced SteelFrame
16145-750	External Cable Managers, 12"W x 7"H x 36"D, for Enhanced SteelFrame
16144-740	External Cable Managers, 6"W x 7"H x 39"D, for Enhanced SteelFrame
16145-740	External Cable Managers, 12"W x 7"H x 39"D, for Enhanced SteelFrame
Wide Enhanced Vertical Cable Manager	
13170-700	4.75"W x 7"H x 8.77"D, for 23"W x 45 RMU MegaFrame
10587-701	Rail Adapter Kit, 23" to 19"W, converts 23"W MegaFrame into a 19"W MegaFrame
Narrow Enhanced Vertical Cable Manager	
13171-700	3.5"W x 7"H x 5.23"D, for MegaFrame M-Series Cabinets (88mm x 2.1 m x 132 mm)
CPI Fiber Management <span style="float: right;">New!</span>	
34719-C05	Fiber Trunk Cable Manager, for 45 RMU N-Series TeraFrame Cabinet
34707-C05	Vertical Furcation Bracket, for 45 RMU N-Series TeraFrame Cabinet
34701-C05	Universal Accessory Rail, for 45 RMU N-Series TeraFrame Cabinet
34716-C02	Swivel Cable Spool, Kit of 6
19" Horizontal Wire Management Panel	
13075-719	19"W x 2 RMU x 4"D (100 mm)
Rack Cabling Manager	
11752-719	Small Rings, 19"W x 1 RMU x 1.3"D (33 mm)
11753-719	Medium Rings, 19"W x 2 RMU x 1.6"D (41 mm)
Horizontal Cable Tray	
10365-719	For 19"W MegaFrame Cabinets, 6"W x 2"H (150 mm x 50 mm), pair
10365-723	For 23"W MegaFrame Cabinets, 6"W x 2"H (150 mm x 50 mm), pair
Rack-Mount Cable Shelf	
13517-701	19"W x 1 RMU, 22" to 40"D (560 mm to 1020 mm)
Large Horizontal Ring Panel	
11564-719	19"W x 2 RMU x 6"D (150 mm)
Front-To-Back Cable Manager	
34541-C01	For 700 mm TeraFrame, 2.3"W x 2.3"D, extends 10"-17", for rail sets 23"-30" apart
34543-C01	For 700 mm TeraFrame, 2.3"W x 2.3"D, extends 6"-10", for rail sets 19"-23" apart
34551-C01	For 800 mm TeraFrame, 4.2"W x 3.8"D, extends 10"-17", for rail sets 23"-30" apart
34553-C01	For 800 mm TeraFrame, 4.2"W x 3.8"D, extends 6"-10", for rail sets 19"-23" apart
13169-701	1.74"W x 2.38"H, For Use With Narrow Enhanced Vertical Cable Manager
13168-701	3.77"W x 2.38"H, For Use With Wide Enhanced Vertical Cable Manager

## Why Choose CPI? Flexibility, Availability and Reliability

Chatsworth Products, Inc. (CPI) is a leading manufacturer of systems designed to organize, store and secure IT infrastructure equipment. As an industry leader, CPI Products set the **BENCHMARK** by providing superior structural support that exceeds customer expectations through innovation, function and performance. Unequalled customer service and technical support, as well as a global network of industry-leading distributors, assures our customers that CPI is dedicated to delivering IT infrastructure solutions designed to meet their needs.

### Flexibility

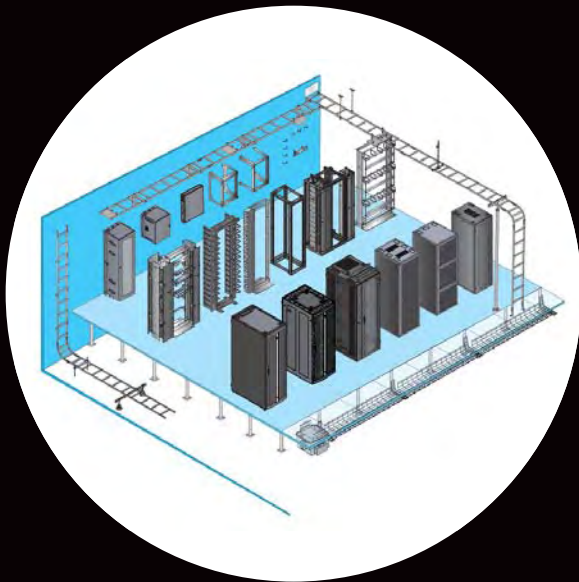
- Achieve Data Center Objectives
- Broad Product Selection
- Customized Configurations
- Adaptable for Future Applications

### Availability

- Global Network of Distributors
- Short Factory Lead Times
- On-Time Delivery

### Reliability

- High Quality Products
- Customer Service & Technical Support
- Heavy Duty Packaging



## The CPI Total Solution Includes:

- Equipment Support
- Cable Management
- Cable Pathways
- Grounding & Bonding
- Security & Monitoring
- Thermal Management
- Power Distribution
- Seismic Bracing

Find more information about CPI Cable Management Products at  
[www.chatsworth.com/cablemanagement](http://www.chatsworth.com/cablemanagement)  
800-834-4969

[techsupport@chatsworth.com](mailto:techsupport@chatsworth.com)

All products quoted are subject to availability based on manufacturing capacity and shipping dates should be considered estimates only. While every effort has been made to ensure the accuracy of all information, CPI does not accept liability for any errors or omissions and reserves the right to change information and descriptions of listed services and products.

©2008 Chatsworth Products, Inc. All rights reserved. CPI, Saf-T-Grip, Seismic Frame, SlimFrame and MegaFrame are federally registered trademarks of Chatsworth Products, Inc. CPI Passive Cooling, Cube-iT Plus, Evolution, Simply Efficient, TeraFrame and QuadraRack are trademarks of Chatsworth Products, Inc. All other trademarks belong to their respective companies. MKT-60020-232 Rev.4 08/08



**CHATSWORTH  
PRODUCTS, INC.**